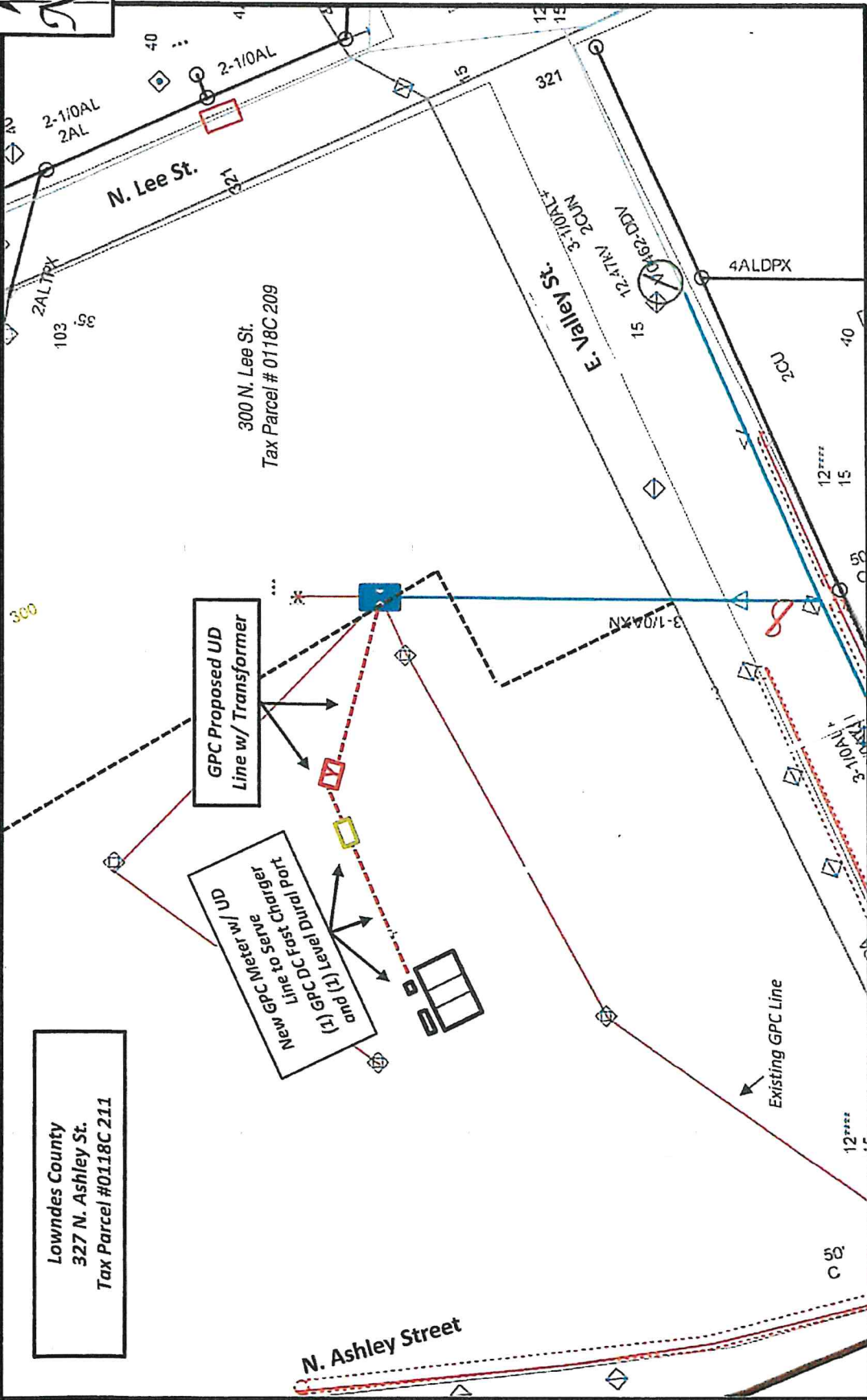


EXHIBIT "A"



Lowndes County
 327 N. Ashley St.
 Tax Parcel #0118C 211

GPC Proposed UD
 Line w/ Transformer

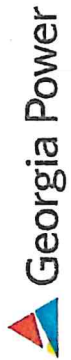
New GPC Meter w/ UD
 Line to Serve
 and (1) Local Dual Port
 (1) GPC Fast Charger

300 N. Lee St.
 Tax Parcel # 0118C 209

LOWNDES COUNTY COURTHOUSE, 327
 N. ASHLEY ST. (LOWNDES COUNTY)
 COMMUNITY CHARGING STATION
 LIMS #2022030039
 Work Location(s): N/A

Parcel 001

DRAWING NOT TO SCALE



Environmental & Natural Resources