

**GENERAL NOTES:**

1. THIS PLAN IS A PRELIMINARY CONCEPTUAL SITE PLAN. THE EXACT LOCATION OF THE BUILDINGS AND THE EXACT LOCATION OF THE DRIVEWAYS SHALL BE DETERMINED BY THE ARCHITECT AND THE ENGINEER AT THE TIME OF THE FINAL DESIGN.
2. THE EXACT LOCATION OF THE BUILDINGS AND THE EXACT LOCATION OF THE DRIVEWAYS SHALL BE DETERMINED BY THE ARCHITECT AND THE ENGINEER AT THE TIME OF THE FINAL DESIGN.
3. THE EXACT LOCATION OF THE BUILDINGS AND THE EXACT LOCATION OF THE DRIVEWAYS SHALL BE DETERMINED BY THE ARCHITECT AND THE ENGINEER AT THE TIME OF THE FINAL DESIGN.
4. THE EXACT LOCATION OF THE BUILDINGS AND THE EXACT LOCATION OF THE DRIVEWAYS SHALL BE DETERMINED BY THE ARCHITECT AND THE ENGINEER AT THE TIME OF THE FINAL DESIGN.
5. THE EXACT LOCATION OF THE BUILDINGS AND THE EXACT LOCATION OF THE DRIVEWAYS SHALL BE DETERMINED BY THE ARCHITECT AND THE ENGINEER AT THE TIME OF THE FINAL DESIGN.
6. THE EXACT LOCATION OF THE BUILDINGS AND THE EXACT LOCATION OF THE DRIVEWAYS SHALL BE DETERMINED BY THE ARCHITECT AND THE ENGINEER AT THE TIME OF THE FINAL DESIGN.
7. THE EXACT LOCATION OF THE BUILDINGS AND THE EXACT LOCATION OF THE DRIVEWAYS SHALL BE DETERMINED BY THE ARCHITECT AND THE ENGINEER AT THE TIME OF THE FINAL DESIGN.
8. THE EXACT LOCATION OF THE BUILDINGS AND THE EXACT LOCATION OF THE DRIVEWAYS SHALL BE DETERMINED BY THE ARCHITECT AND THE ENGINEER AT THE TIME OF THE FINAL DESIGN.
9. THE EXACT LOCATION OF THE BUILDINGS AND THE EXACT LOCATION OF THE DRIVEWAYS SHALL BE DETERMINED BY THE ARCHITECT AND THE ENGINEER AT THE TIME OF THE FINAL DESIGN.
10. THE EXACT LOCATION OF THE BUILDINGS AND THE EXACT LOCATION OF THE DRIVEWAYS SHALL BE DETERMINED BY THE ARCHITECT AND THE ENGINEER AT THE TIME OF THE FINAL DESIGN.

**V D W E**  
**VAN DER WATT**  
**ENGINEERING, LLC**  
 CONSULTING CIVIL ENGINEERS  
 84 BOUNTY OAK CIRCLE  
 THOSVILLE, GA 31787  
 TEL: (706) 331-0303  
 FAX: (706) 331-0304  
 EMAIL: VDW@VANDERWATTENG.COM

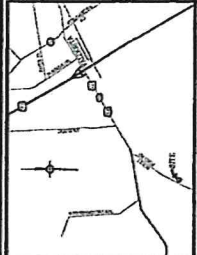
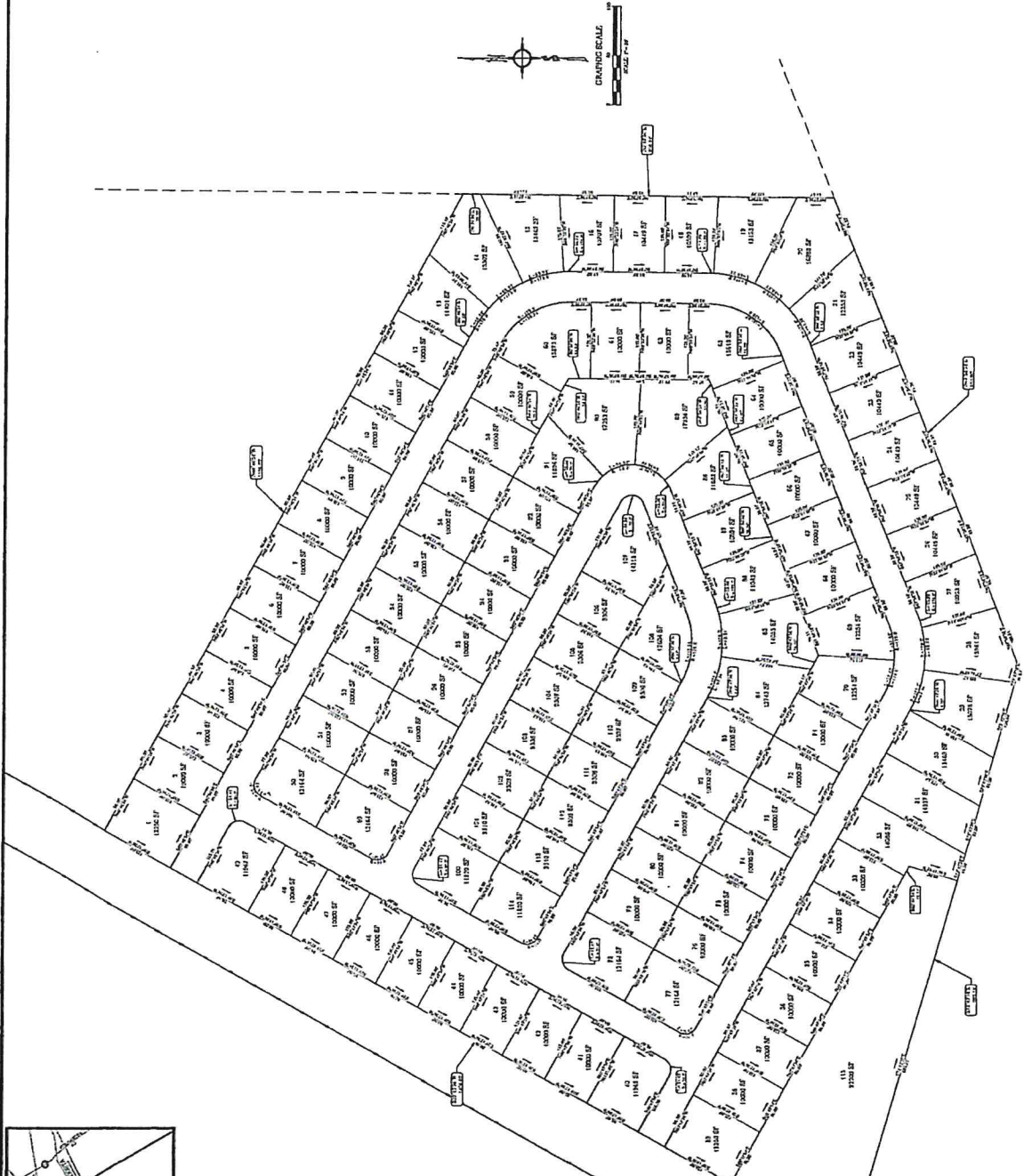
PROJECT:  
**CONCEPTUAL SITE PLAN**  
**RESIDENTIAL SUBDIVISION**  
**ROCKY FORD ROAD**  
**VALDOSTA, GA 31604**

CLIENT:  
**JAMES WARREN & ASSOCIATES, INC**  
**VALDOSTA, GA 31604**

DATE:  
**CONCEPTUAL SITE PLAN**

NO. 101	3/16/18	3/16/18	3/16/18
NO. 102	3/16/18	3/16/18	3/16/18
NO. 103	3/16/18	3/16/18	3/16/18
NO. 104	3/16/18	3/16/18	3/16/18
NO. 105	3/16/18	3/16/18	3/16/18
NO. 106	3/16/18	3/16/18	3/16/18
NO. 107	3/16/18	3/16/18	3/16/18
NO. 108	3/16/18	3/16/18	3/16/18
NO. 109	3/16/18	3/16/18	3/16/18
NO. 110	3/16/18	3/16/18	3/16/18
NO. 111	3/16/18	3/16/18	3/16/18
NO. 112	3/16/18	3/16/18	3/16/18
NO. 113	3/16/18	3/16/18	3/16/18
NO. 114	3/16/18	3/16/18	3/16/18
NO. 115	3/16/18	3/16/18	3/16/18
NO. 116	3/16/18	3/16/18	3/16/18
NO. 117	3/16/18	3/16/18	3/16/18
NO. 118	3/16/18	3/16/18	3/16/18
NO. 119	3/16/18	3/16/18	3/16/18
NO. 120	3/16/18	3/16/18	3/16/18
NO. 121	3/16/18	3/16/18	3/16/18
NO. 122	3/16/18	3/16/18	3/16/18
NO. 123	3/16/18	3/16/18	3/16/18
NO. 124	3/16/18	3/16/18	3/16/18
NO. 125	3/16/18	3/16/18	3/16/18
NO. 126	3/16/18	3/16/18	3/16/18
NO. 127	3/16/18	3/16/18	3/16/18
NO. 128	3/16/18	3/16/18	3/16/18
NO. 129	3/16/18	3/16/18	3/16/18
NO. 130	3/16/18	3/16/18	3/16/18
NO. 131	3/16/18	3/16/18	3/16/18
NO. 132	3/16/18	3/16/18	3/16/18
NO. 133	3/16/18	3/16/18	3/16/18
NO. 134	3/16/18	3/16/18	3/16/18
NO. 135	3/16/18	3/16/18	3/16/18
NO. 136	3/16/18	3/16/18	3/16/18
NO. 137	3/16/18	3/16/18	3/16/18
NO. 138	3/16/18	3/16/18	3/16/18
NO. 139	3/16/18	3/16/18	3/16/18
NO. 140	3/16/18	3/16/18	3/16/18
NO. 141	3/16/18	3/16/18	3/16/18
NO. 142	3/16/18	3/16/18	3/16/18
NO. 143	3/16/18	3/16/18	3/16/18
NO. 144	3/16/18	3/16/18	3/16/18
NO. 145	3/16/18	3/16/18	3/16/18
NO. 146	3/16/18	3/16/18	3/16/18
NO. 147	3/16/18	3/16/18	3/16/18
NO. 148	3/16/18	3/16/18	3/16/18
NO. 149	3/16/18	3/16/18	3/16/18
NO. 150	3/16/18	3/16/18	3/16/18
NO. 151	3/16/18	3/16/18	3/16/18
NO. 152	3/16/18	3/16/18	3/16/18
NO. 153	3/16/18	3/16/18	3/16/18
NO. 154	3/16/18	3/16/18	3/16/18
NO. 155	3/16/18	3/16/18	3/16/18
NO. 156	3/16/18	3/16/18	3/16/18
NO. 157	3/16/18	3/16/18	3/16/18
NO. 158	3/16/18	3/16/18	3/16/18
NO. 159	3/16/18	3/16/18	3/16/18
NO. 160	3/16/18	3/16/18	3/16/18
NO. 161	3/16/18	3/16/18	3/16/18
NO. 162	3/16/18	3/16/18	3/16/18
NO. 163	3/16/18	3/16/18	3/16/18
NO. 164	3/16/18	3/16/18	3/16/18
NO. 165	3/16/18	3/16/18	3/16/18
NO. 166	3/16/18	3/16/18	3/16/18
NO. 167	3/16/18	3/16/18	3/16/18
NO. 168	3/16/18	3/16/18	3/16/18
NO. 169	3/16/18	3/16/18	3/16/18
NO. 170	3/16/18	3/16/18	3/16/18
NO. 171	3/16/18	3/16/18	3/16/18
NO. 172	3/16/18	3/16/18	3/16/18
NO. 173	3/16/18	3/16/18	3/16/18
NO. 174	3/16/18	3/16/18	3/16/18
NO. 175	3/16/18	3/16/18	3/16/18
NO. 176	3/16/18	3/16/18	3/16/18
NO. 177	3/16/18	3/16/18	3/16/18
NO. 178	3/16/18	3/16/18	3/16/18
NO. 179	3/16/18	3/16/18	3/16/18
NO. 180	3/16/18	3/16/18	3/16/18
NO. 181	3/16/18	3/16/18	3/16/18
NO. 182	3/16/18	3/16/18	3/16/18
NO. 183	3/16/18	3/16/18	3/16/18
NO. 184	3/16/18	3/16/18	3/16/18
NO. 185	3/16/18	3/16/18	3/16/18
NO. 186	3/16/18	3/16/18	3/16/18
NO. 187	3/16/18	3/16/18	3/16/18
NO. 188	3/16/18	3/16/18	3/16/18
NO. 189	3/16/18	3/16/18	3/16/18
NO. 190	3/16/18	3/16/18	3/16/18
NO. 191	3/16/18	3/16/18	3/16/18
NO. 192	3/16/18	3/16/18	3/16/18
NO. 193	3/16/18	3/16/18	3/16/18
NO. 194	3/16/18	3/16/18	3/16/18
NO. 195	3/16/18	3/16/18	3/16/18
NO. 196	3/16/18	3/16/18	3/16/18
NO. 197	3/16/18	3/16/18	3/16/18
NO. 198	3/16/18	3/16/18	3/16/18
NO. 199	3/16/18	3/16/18	3/16/18
NO. 200	3/16/18	3/16/18	3/16/18

**GEORGIA 811**  
 State of Georgia  
 Professional Engineer  
 License No. 10000



**GEORGIA 811**  
 State of Georgia  
 Professional Engineer  
 License No. 10000