

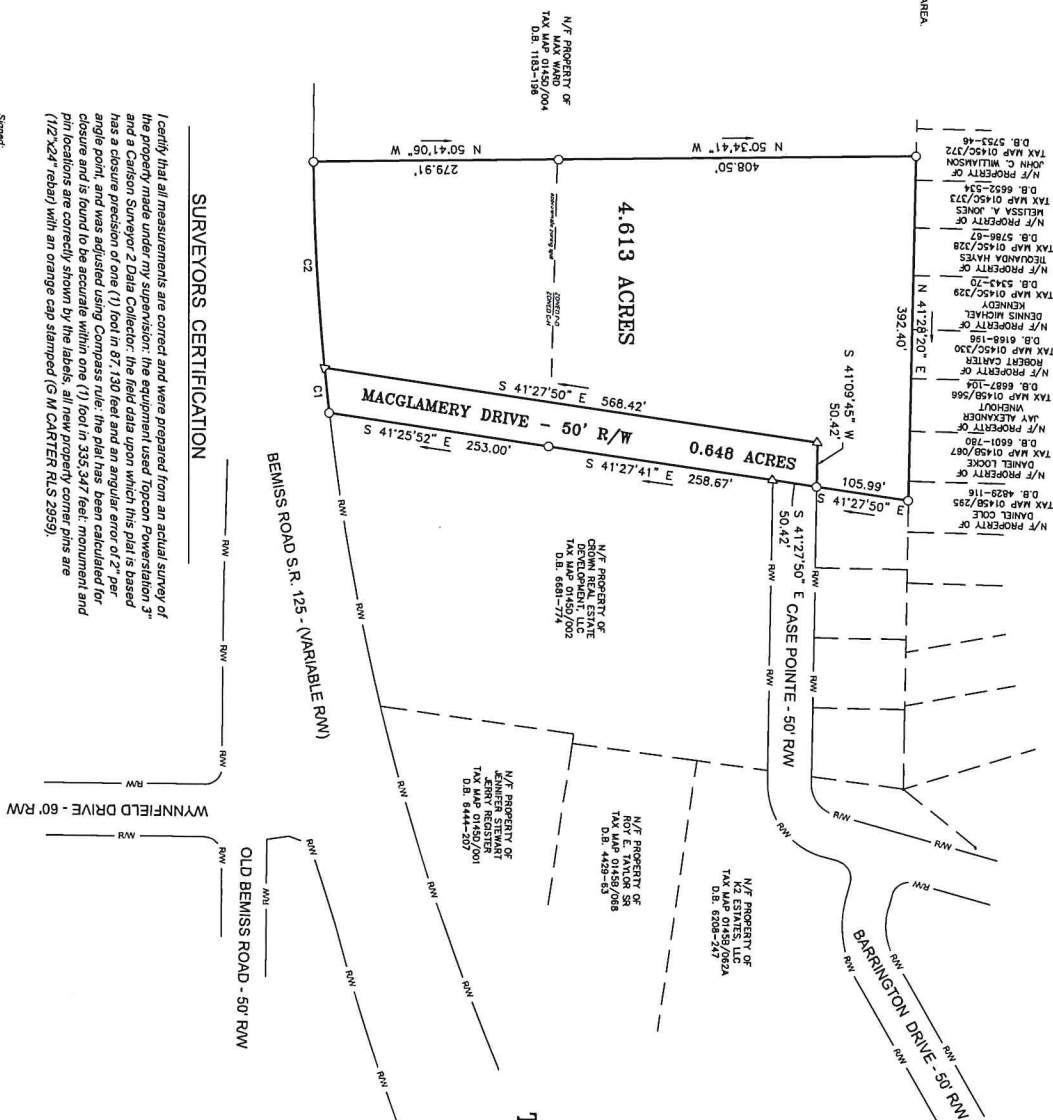
Form Map # 13185C0150E  
 Zone "X"  
 Area of minimal flood hazard.  
 Effective Date: 09-28-2008.

CURVE RADIIUS	ARC LENGTH	CHORD LENGTH	CHORD BEARING	BETA ANGLE
C1	1298.29	151.48	S 34°02'11" W	17°03'16"
C2	1298.29	124.70	S 34°45'31" W	14°58'32"

**SITE INFORMATION**

- MUNICIPALITY: LOWNES COUNTY
- TAX MAP #1450 - PARCEL 002
- LAND DISTRICT: 11
- CURRENT ZONING: PD 6 & CH
- UTILITIES: LOWLANDS COUNTY WATER AND SEWER
- JURISDICTION: WETLANDS ON SITE NONE (RECHARGE AREA)
- TOTAL ACREAGE IS 5.261 ACRES (INCLUDES ROADWAY)

As required by subsection (a) of DCDA prepared by a land surveyor and approved by all applicable local jurisdictions for certification. Such approval or certification signifies that the surveyor has reviewed the plat and the appropriate governmental bodies by any other means. The surveyor certifies that the information on this plat is true and correct to the best of his or her knowledge and belief. The surveyor certifies that the information on this plat is true and correct to the best of his or her knowledge and belief. The surveyor certifies that the information on this plat is true and correct to the best of his or her knowledge and belief. The surveyor certifies that the information on this plat is true and correct to the best of his or her knowledge and belief.

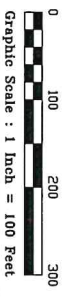


**SURVEYORS CERTIFICATION**

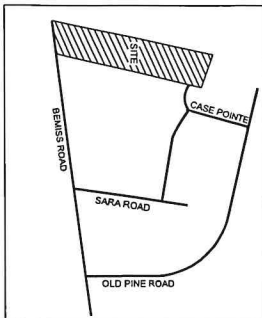
I certify that all measurements are correct and were prepared from an actual survey of the property made under my supervision; the equipment used Topcon PowerStation 3" and Carlson Surveyor 2 Data Collector; the field data upon which this plat is based has a closure precision of one (1) foot in 87,130 feet and an angular error of 2" per angle point, and was adjusted using Compass rule; the plat has been calculated for closure and is found to be accurate within one (1) foot in 335,347 feet; monument and pin locations are correctly shown by the labels; all new property corner pins are (1/2"x24" rebar) with an orange cap stamped (G M CARTER RLS 2959).

SIGNED \_\_\_\_\_ DATE \_\_\_\_\_  
 LOWNES COUNTY UNIFIED LAND DEVELOPMENT CODE  
 APPROVAL, CHAIRMAN, TECHNICAL REVIEW COMMITTEE

Spined \_\_\_\_\_  
 Surveyor Georgia Registration No. 2959



**LOCATION MAP**  
 NOT TO SCALE



**LEGEND**

- PS - IRON PIN FOUND
- PF - IRON PIN FOUND
- GF - GALVANIZED PIPE FOUND
- CM - CONCRETE MONUMENT FOUND
- CP - CONCRETE PIPE FOUND
- C/L - CENTERLINE
- PO - POWER LINE
- UT - OVERHEAD UTILITY
- UE - UNDERGROUND ELECTRIC
- US - SANDIARY SEWER
- CB - CATCH BASIN
- DI - DRAIN INLET
- PS - PS WITH CAP #2959
- NS - NEW SURVEY POINT

Boundary Survey For:  
**TWO OAKS AT BEMISS**  
 Land Lots 131 11th L.D.,  
 Lowndes County, Georgia.  
 MAY 11, 2021

**Carter Surveying, L.L.C.**  
 246 McGrew Road  
 Willedonoches, Georgia 31650  
 Established 2004  
 USA # 0071-05 Plat # 0071-05  
 Fax Map / parcel(s) 01450/003  
 Ph. 912.534.5065 email pmc@surveyingpl.com