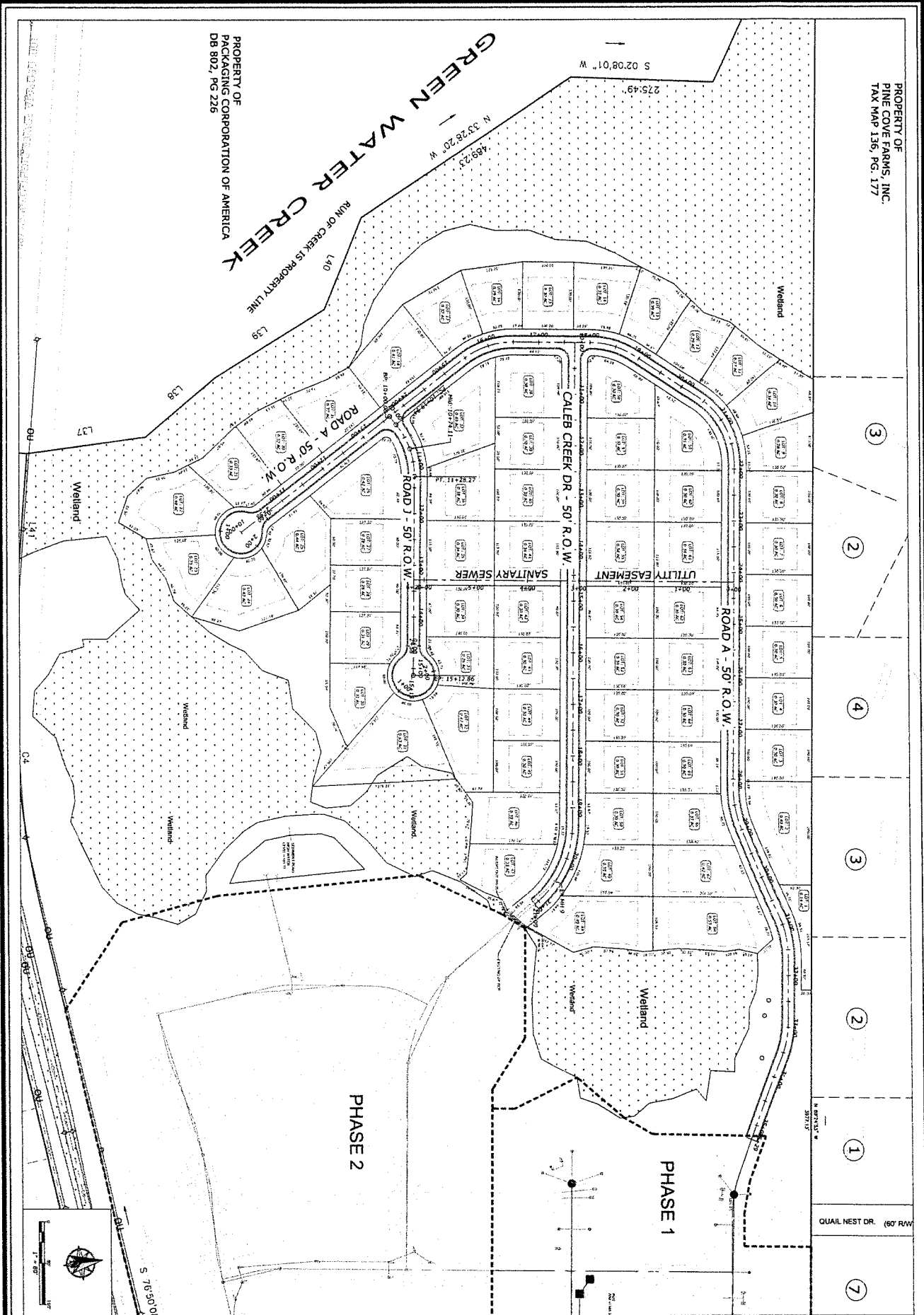


PROPERTY OF
PINE COVE FARMS, INC.
TAX MAP 136, PG. 177

PROPERTY OF
PACKAGING CORPORATION OF AMERICA
DB 802, PG 226

1/13/2025 Quarterman Estate West Phase 3 DWG 13638 - QUARTERMAN ESTATES PHASE 3, LIT/2025/9/24/210 AM



- 3
- 2
- 4
- 3
- 2
- 1
- 7

QUAIL NEST DR. (60' RAV)

DATE	BY	DESCRIPTION
02/20/25	GWS	DRAWN BY
	MLS	CHECKED BY
	ISL	PROJECT
		CAD FILE
		DATE

PARCEL PLAN SHEET FOR:
QUARTERMAN ESTATES WEST PHASE 3
LOCATED IN L.L. 65 & 66 OF THE 16TH L.D.
OF LOWNDES COUNTY, GA

ARROW ENGINEERING
& CONSTRUCTION SERVICES
2622 W. 77th St. #407
Woodstock, GA 30189
770.961.1711
PEARSON@ARROWENGINEERING.COM



PROJECT: 18038
SHEET
C2.0