

# RF Propagation Maps for BERMUDA RUN Site

**Anm Badruddoza**

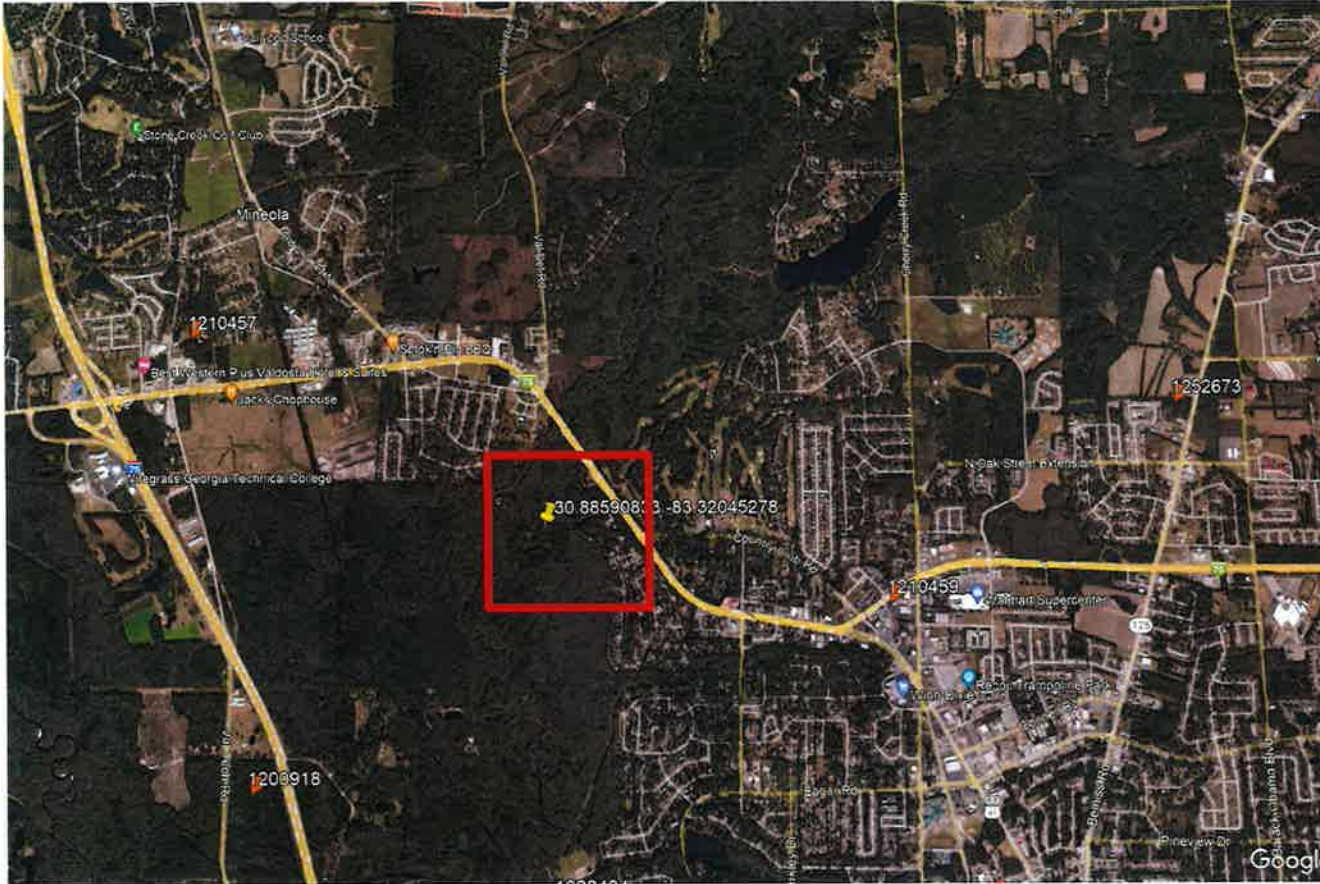
**Radio Frequency Engineer**

**Verizon Wireless**



Confidential and proprietary materials for authorized Verizon personnel and outside agencies only. Use, disclosure or distribution of this material is not permitted to any unauthorized persons or third parties except by written agreement.

# Service Area



**BERMUDA RUN proposed location is at 3781 N Valdosta Rd, Valdosta, GA-31602**

**Location Coordinates**

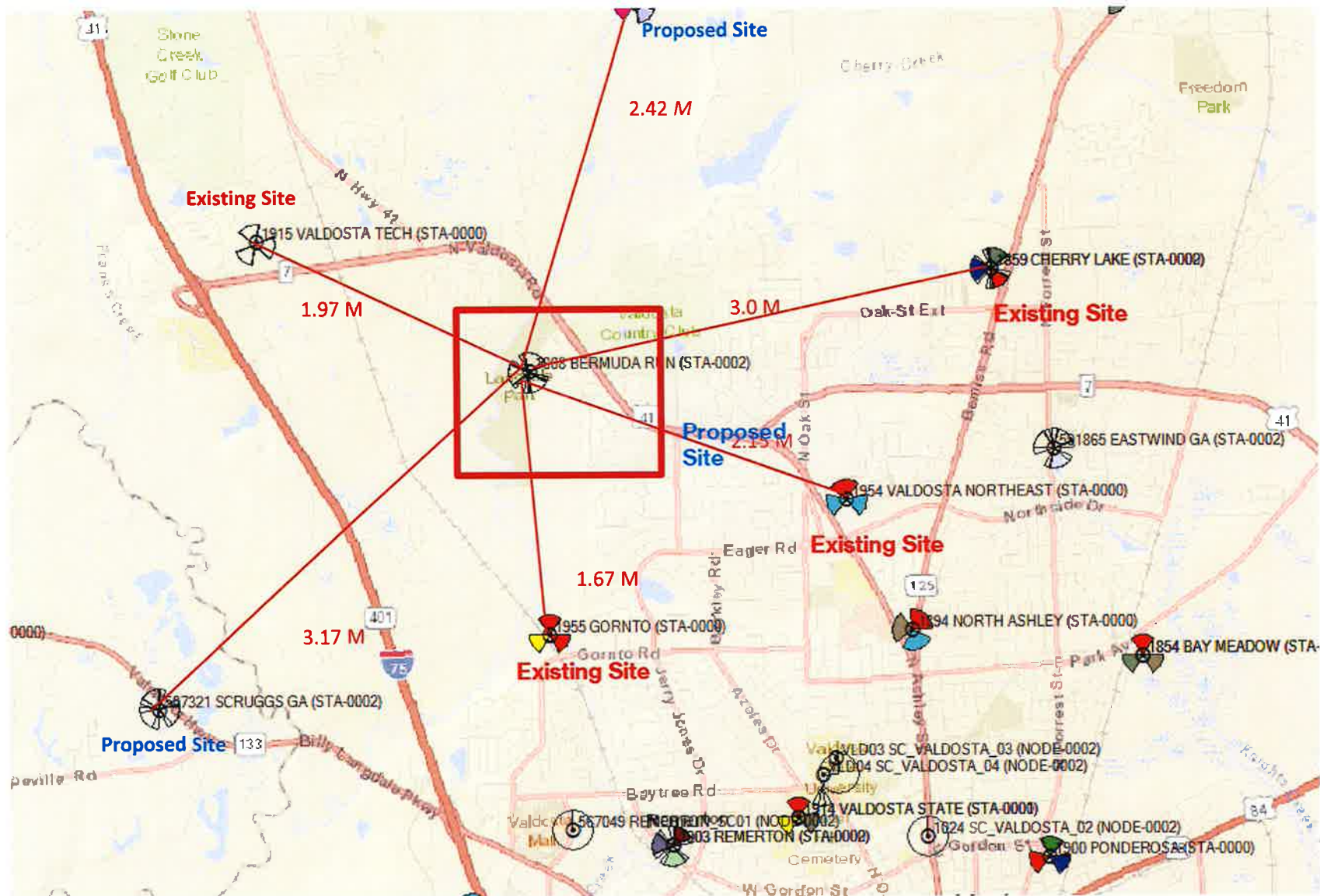
**30° 53' 9.27" N /83° 19' 13.63" W**

**Service improvements targeted on residential areas and businesses near Valdosta Country Club.**

**The proposed site will improve wireless service capacity and in-building level coverage in the surrounding residential & commercial areas of Valdosta Country Club.**

**One of the primary design goal of BERMUDA RUN site is to offload traffic from nearby sites TILLMAN, VALDOSTA NORTHEAST & VALDOSTA TECH.**

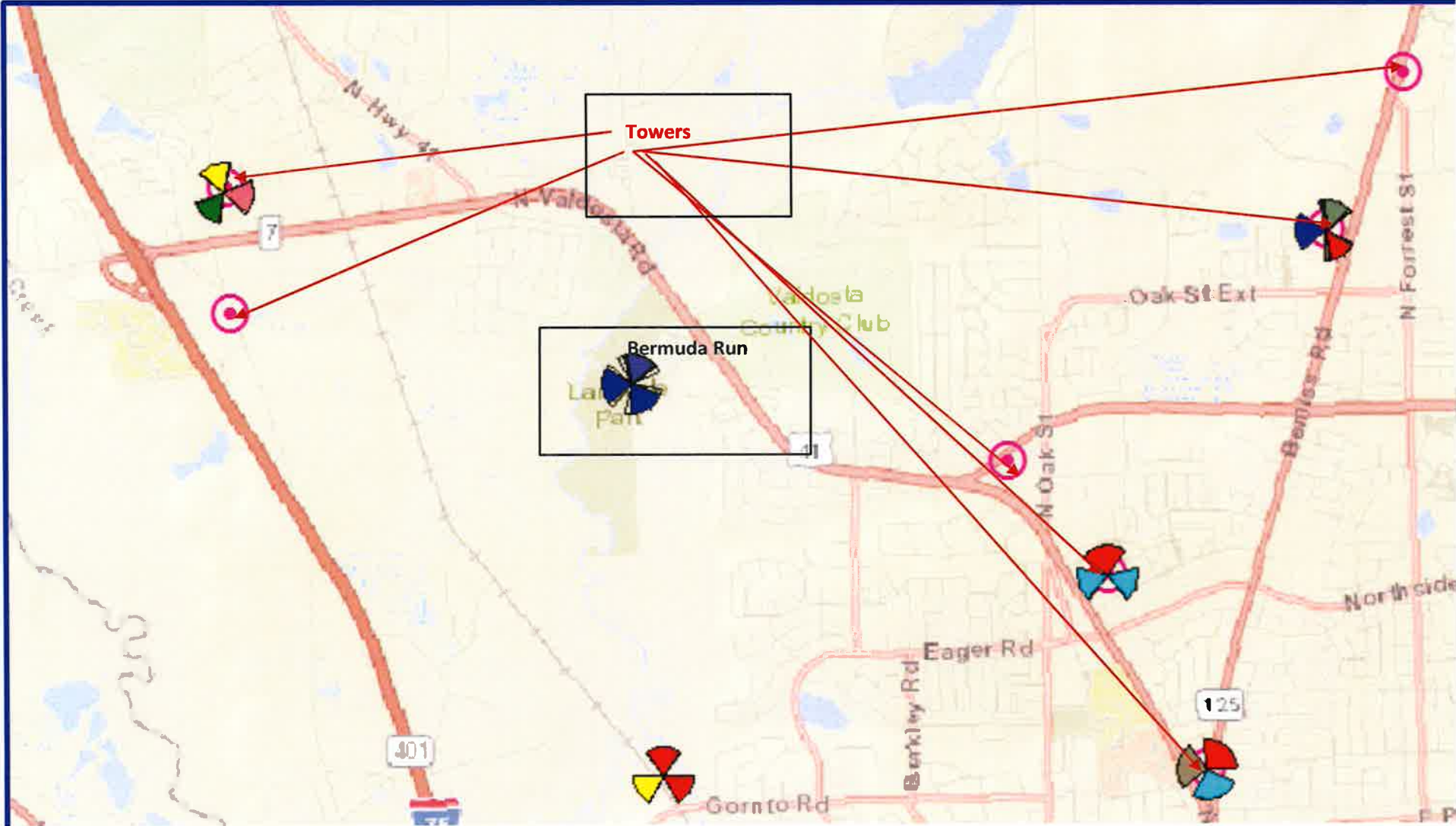
# Sites around the BERMUDA RUN search area



# Inventory list of existing Non Verizon Towers around the BERMUDA RUN search area

Owner Name	Registration Number	File Number	Latitude	Longitude	Structure City/State	Overall Height Above Ground (AGL)	Distance from Proposed Location (miles)	Existing Vzw Towers
SBA Towers II LLC	1252673	A0684144	30.893667	-83.271167	Valdosta, GA	188	2.1	Yes
CTI Towers Assets II, LLC	1022434	A1115900	30.861694	-83.319417	Valdosta, GA	210	2.3	Yes
SBA Properties, LLC	1210457	A0833534	30.898500	-83.348917	Valdosta, GA	200	2.6	Yes
CCATT LLC	1272589	A1027403	30.860889	-83.281056	Valdosta, GA	144	2.6	Yes
Pinnacle Towers Acquisition LLC	1230989	A1021380	30.918306	-83.257528	Valdosta, GA	176	3.4	Yes
SBA Properties, LLC	1217741	A0833889	30.857861	-83.256778	Valdosta, GA	200	3.8	Yes
SBA Properties, LLC	1210459	A0833536	30.880278	-83.294167	Valdosta, GA	199	1.1	No
American Community Oriented Radio Network, Inc.	1200918	A0091558	30.868528	-83.342472	Valdosta, GA	325	2.7	No
Scruggs Company	1241565	A0358517	30.931306	-83.352083	Valdosta, GA	319	3.8	No

# Towers around the BERMUDA RUN search area



There is no tower close to the Bermuda Run site. Existing towers are very close to the existing sites.

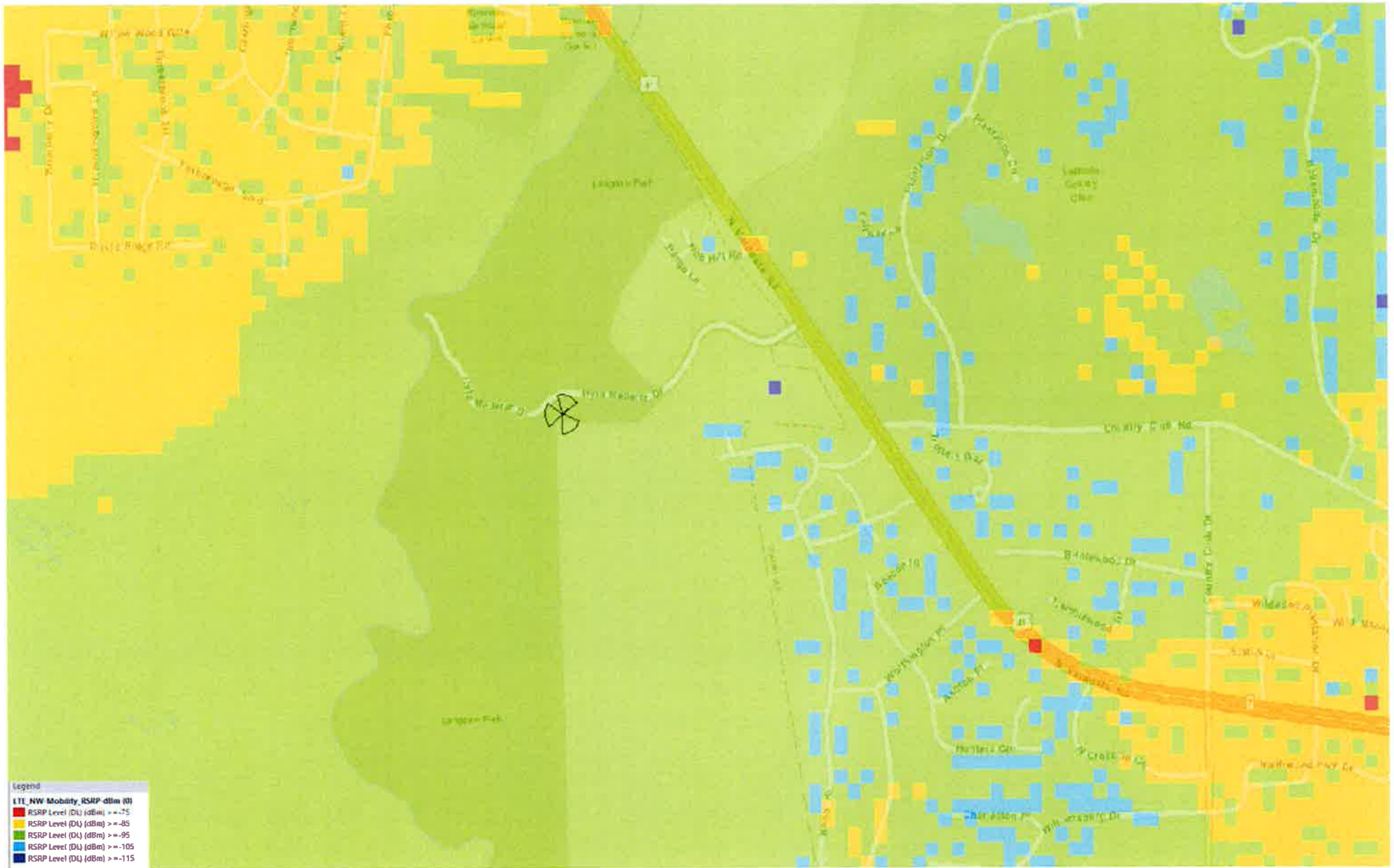


# Capacity Issue : Valdosta NorthEast

SiteName	Market	Uniqueld	BandGrp	KSP2023	PreTrg2	PostTrg	InitCompUtil2023	P
VALDOSTA NORTHEAST	176	176954-1-1 176954-1-7	SUB1	172.8	y	y	2.51	
VALDOSTA NORTHEAST	176	176954-1-4 776954-1-2 776954	SUB3	317.43	y	y	10.06	

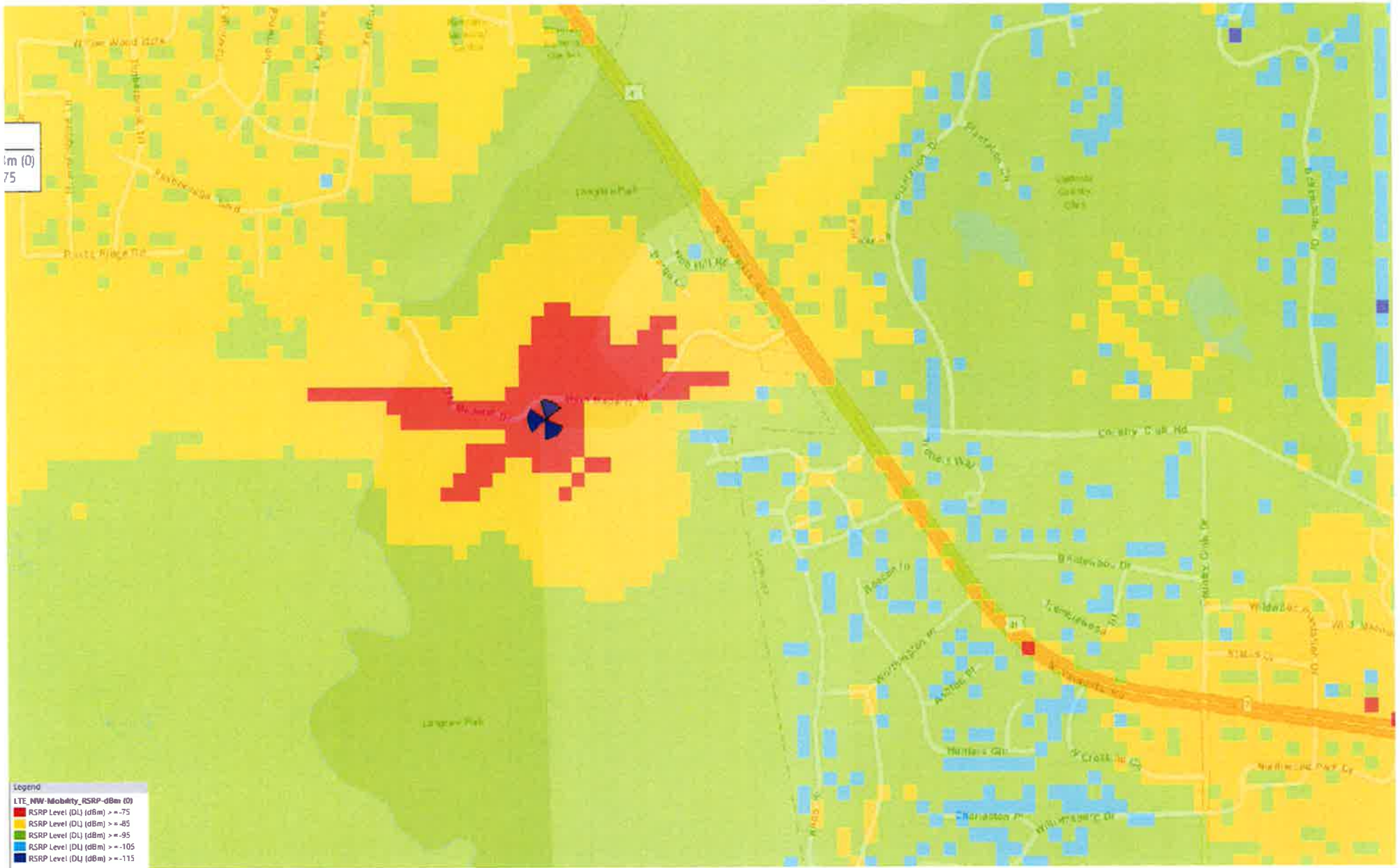
- Bermuda Run was primarily proposed to resolve the Capacity Issue of its neighbor **Valdosta NorthEast (Alpha)**
- CompU is getting very high; values of over 0.8 mean that a sector of a site is overloaded and needs a solution to offload wireless traffic
- Both Sub1 and Sub3 are triggering; this means that the sector has a serious capacity issue and needs a solution.

# Coverage with Bermuda Run site



Confidential and proprietary materials for authorized Verizon personnel and outside agencies only. Use, disclosure or distribution of this material is not permitted to any unauthorized persons or third parties except by written agreement.

# Coverage without Bermuda Run site



Confidential and proprietary materials for authorized Verizon personnel and outside agencies only. Use, disclosure or distribution of this material is not permitted to any unauthorized persons or third parties except by written agreement.

# Verizon Legal Disclaimer

*These maps are not a guarantee of coverage and may contain areas with no service. These maps reflect a depiction of predicted and approximate wireless coverage of the network and is intended to provide a relative comparison of coverage. The depictions of coverage do not guarantee service availability as there are many factors that can influence coverage and service availability. These factors vary from location to location and change over time. The coverage areas may include locations with limited or no coverage. Even within a coverage area shown, there are many factors, including but not limited to, usage volumes, service outages, customer's equipment, terrain, proximity to buildings, foliage, and weather that may impact service ("Factors"). The representations of "fair", "good" and "best" are qualitative representations of relative wireless outdoor signal strength at the network facilities level. Generally, calls can be made and received within all three categories, however, these Factors will likely have greater impact in areas of "fair" coverage. You can only make and receive calls when digital service is available. [When digital service is not available your device will not operate or be able to make 911 calls.]*

**Thank you.**