

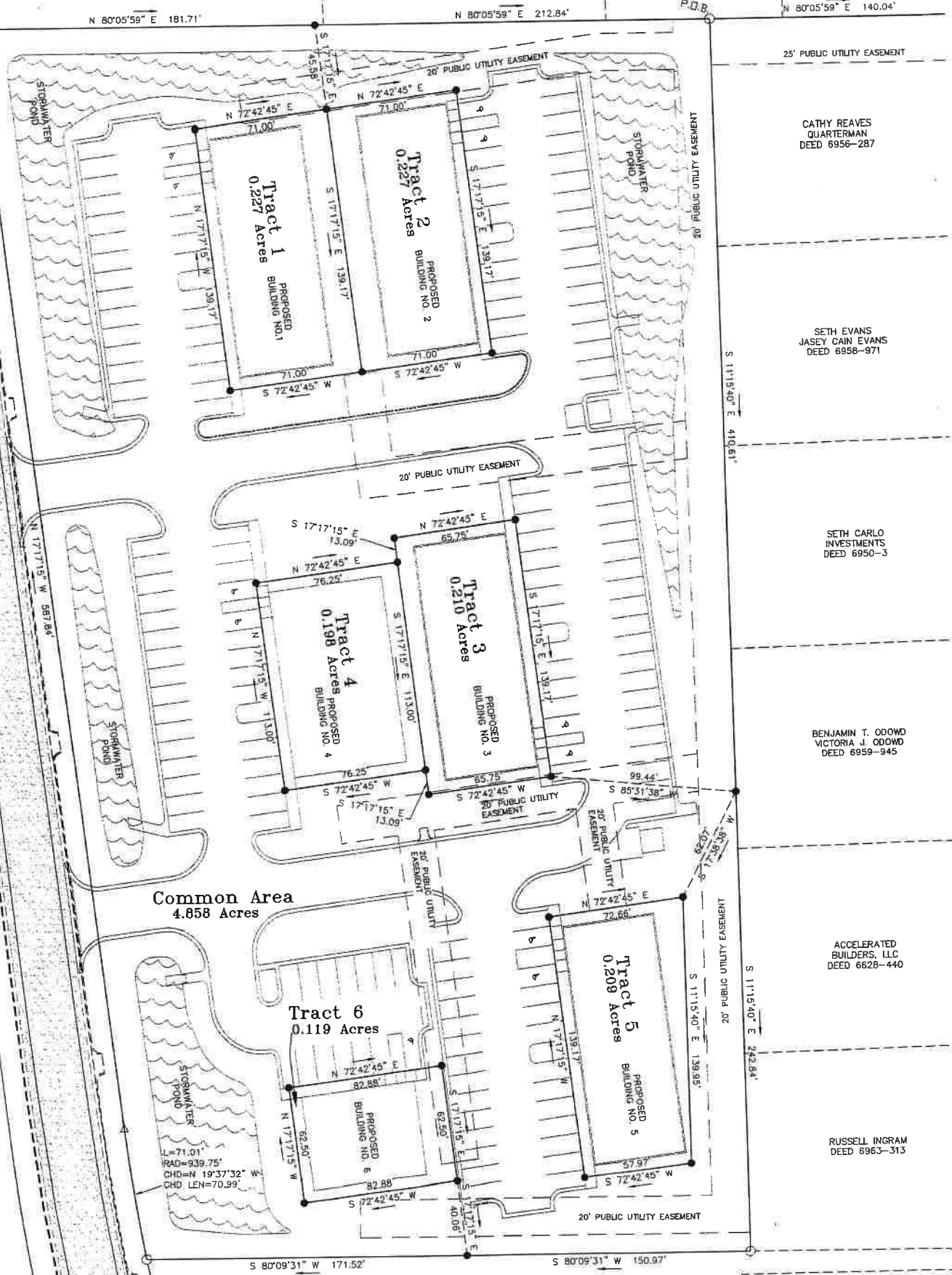
LARRY EUGENE
RAINES, SR
PATRICIA ANN M.
RAINES
DEED 6591-251

AMANDA M.
RICHARDSON
DEED 6325-46

WILLIAM C. JONES
FELICIA S. JONES
DEED 721-304

JOHNNY EDWARD
CAIN, JR
DEED 4326-265

South Church Street (A.K.A. Old U.S. Highway #41) - 60' R/W



N 80°05'59" E 181.71'

N 80°05'59" E 212.84'

N 80°05'59" E 140.04'

25' PUBLIC UTILITY EASEMENT

CATHY REAVES
QUARTERMAN
DEED 6956-287

SETH EVANS
JASEY CAIN EVANS
DEED 6958-971

SETH CARLO
INVESTMENTS
DEED 6950-3

BENJAMIN T. ODOWD
VICTORIA J. ODOWD
DEED 6959-945

ACCELERATED
BUILDERS, LLC
DEED 6628-440

RUSSELL INGRAM
DEED 6963-313

LANG SMITH
SMOTHERMAN
DEED 1157-318

CITY OF HAHIRA

Common Area
4.858 Acres

Tract 6
0.119 Acres

Tract 5
0.209 Acres

Tract 3
0.210 Acres

Tract 4
0.198 Acres

Tract 1
0.227 Acres

Tract 2
0.227 Acres

L=71.01'
RAD=939.75'
CHD=N 19°37'32" W
CHD LEN=70.99'