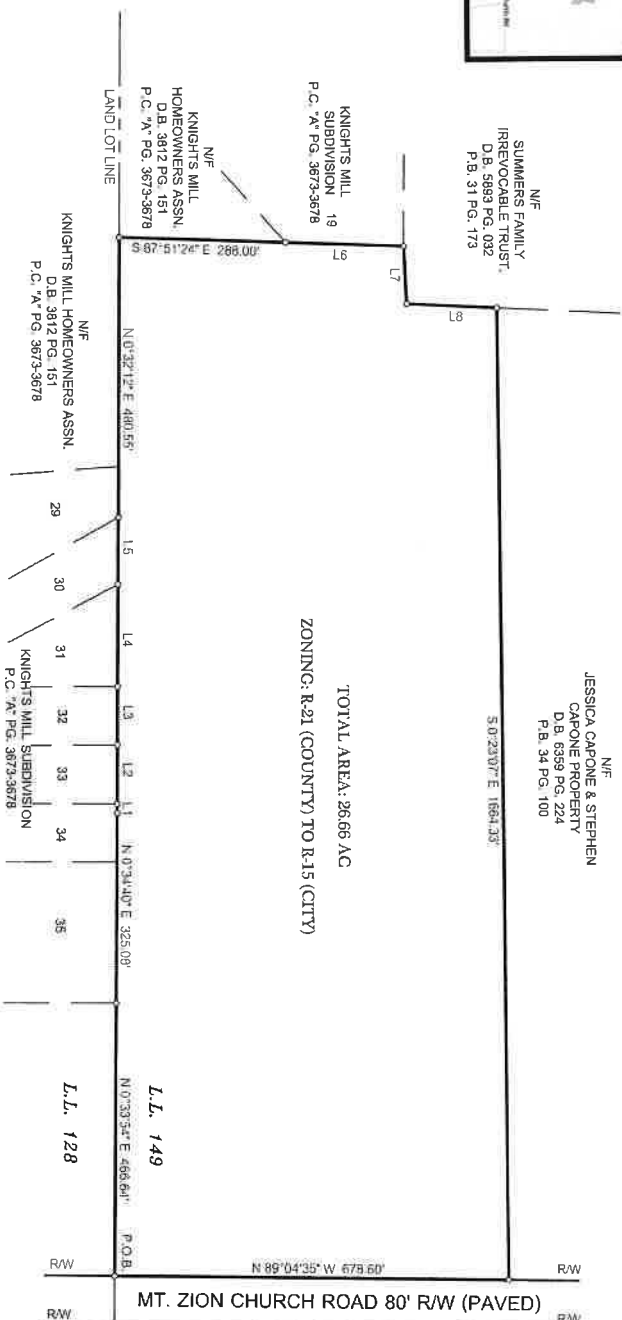




VICINITY MAP

LINE	LENGTH	BEARING
L1	15.83'	N 0°20'27" W
L2	100.48'	N 0°29'23" E
L3	100.31'	N 0°34'08" E
L4	175.95'	N 0°32'25" E
L5	114.57'	N 0°31'53" E
L6	209.05'	S 87°47'42" E
L7	99.66'	S 22°51'6" E
L8	155.71'	S 87°07'30" E



INNOVATE!
 Engineering & Surveying
 PHONE: 229-249-9113 - www.innovatees.com
 2214 N. Patterson Street, Valdosta, GA 31602

ANNEXATION & REZONING SURVEY FOR:
JASON GLAS

LOCATED IN
 LAND LOT 149
 11TH LAND DISTRICT
 CITY OF VALDOSTA
 LOWNDES COUNTY, GA
 PLAT DATE: 01/15/2024

