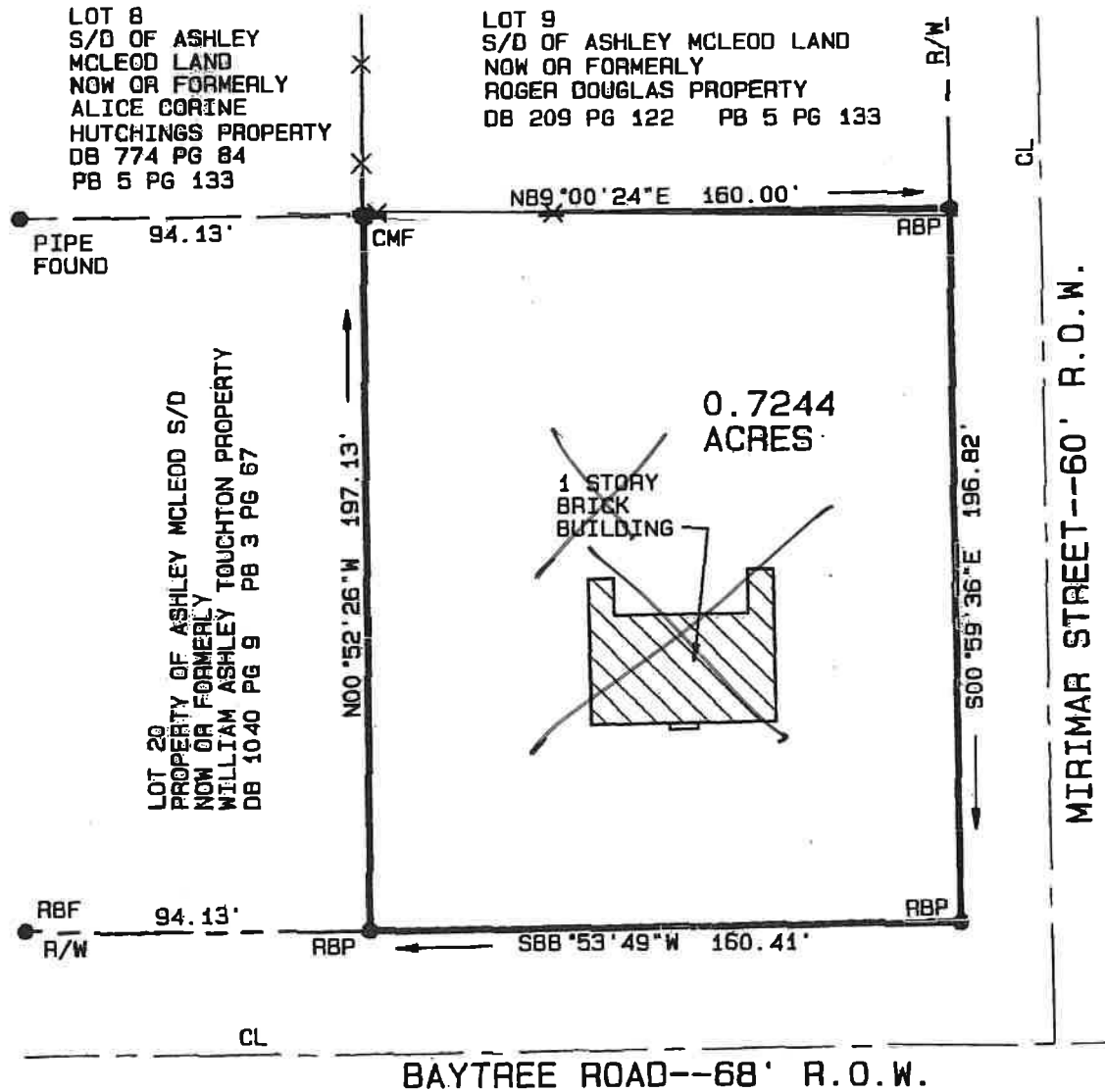


THE FIELD DATA UPON WHICH THIS PLAT IS BASED HAS A CLOSURE PRECISION OF 1' IN OPEN TRAVERSE WITH AN ANGLE ERROR OF OPEN TRAVERSE PER ANGLE POINT AND WAS NOT ADJUSTED THIS PLAT HAS BEEN CALCULATED FOR CLOSURE AND IS FOUND TO BE ACCURATE WITHIN 1' IN 10,000' EQUIPMENT USED: WILD TC500 5" THEODOLITE AND EDM TOTAL STATION AND 100' TAPE

**LEGEND**  
 RBF = REBAR FOUND  
 RBP = REBAR PLACED  
 CMF = CONCRETE MONUMENT FOUND  
 CMP = CONCRETE MONUMENT PLACED  
 R/W OR R.O.W. = RIGHT OF WAY  
 CL = CENTERLINE  
 --- X --- X = FENC  
 --- X --- X = NOT



6-3-1998

DATE : WED JUN 3 14: 39: 17 1998  
 PROJECT : PBC  
 TITLE : JIM