


Lowndes County, GA Zoning Map November 2022

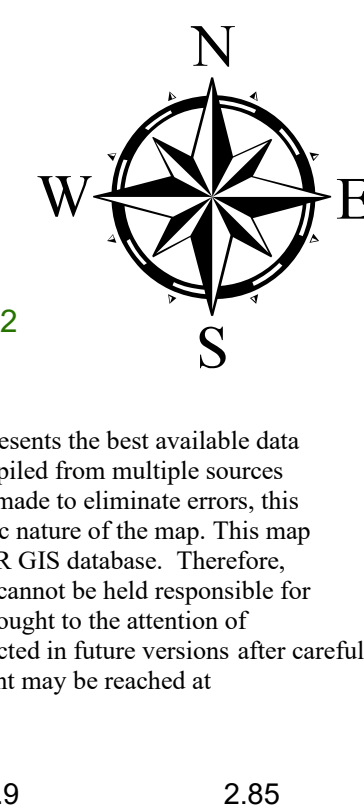
VALOR
Valdosta - Lowndes - Regional Geographic Information System
Visit VALOR on the web at <https://www.valorgis.com/>

sgirc SOUTHERN GEORGIA
REGIONAL COMMISSION

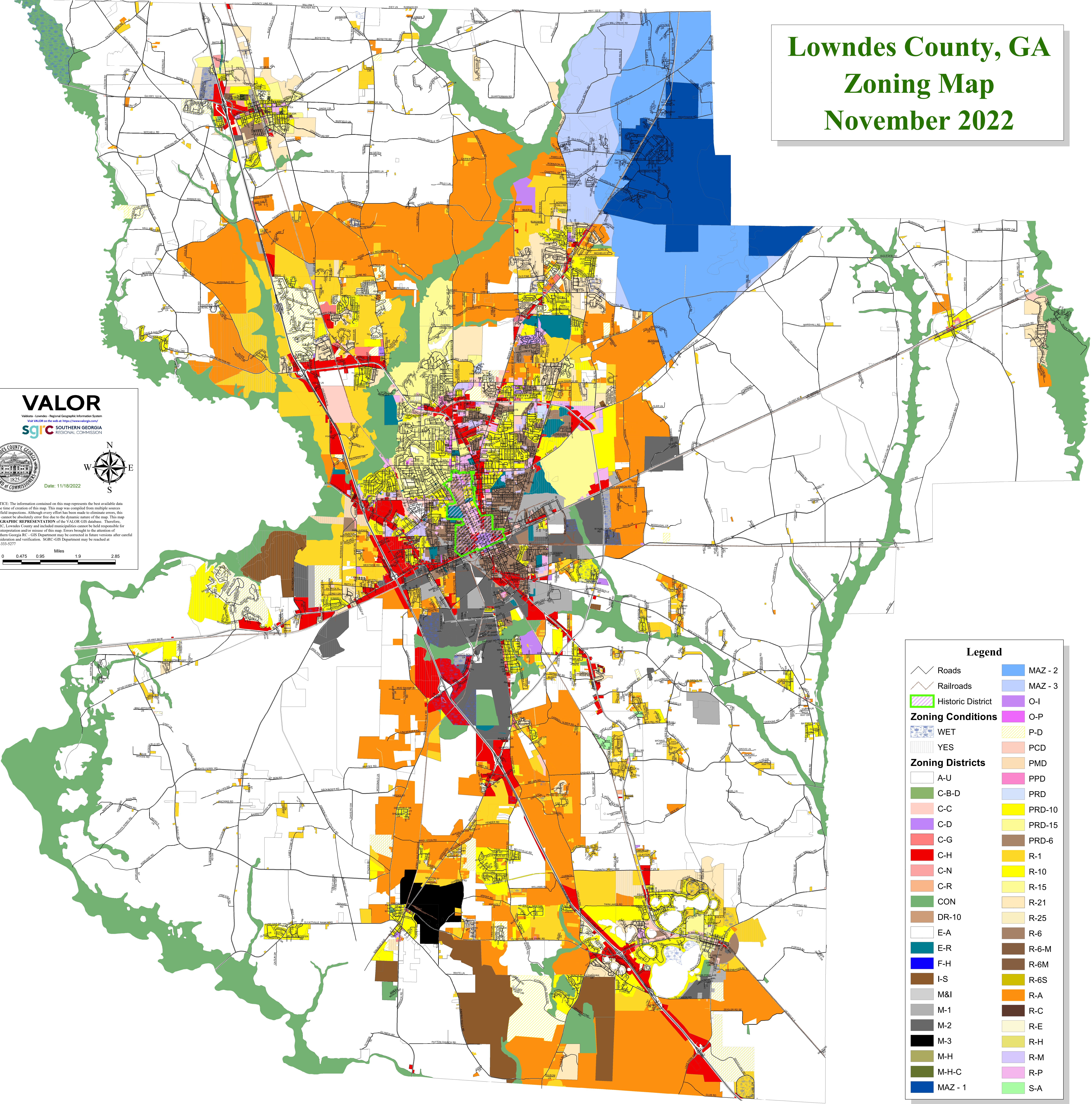


Date: 11/18/2022

NOTICE: The information contained on this map represents the best available data at the time of creation of this map. This map was compiled from multiple sources and field inspections. Although every effort has been made to eliminate errors, this map cannot be absolutely error free due to the dynamic nature of the map. This map is a GRAPHIC REPRESENTATION of the VALOR GIS database. Therefore, SGIRC, Lowndes County and included municipalities cannot be held responsible for misinterpretation and/or misuse of this map. Errors brought to the attention of Southern Georgia RC - GIS Department may be corrected in future versions after careful consideration and verification. SGIRC-GIS Department may be reached at 229.333.5277



0 0.475 0.95 1.9 2.85 Miles



Legend

Roads	MAZ - 2
Railroads	MAZ - 3
Historic District	O-I
Zoning Conditions	O-P
WET	P-D
YES	PCD
Zoning Districts	PMD
A-U	PPD
C-B-D	PRD
C-C	PRD-10
C-D	PRD-15
C-G	PRD-6
C-H	R-1
C-N	R-10
C-R	R-15
CON	R-21
DR-10	R-6
E-A	R-6-M
E-R	R-6M
F-H	R-6S
I-S	R-A
M&I	R-C
M-1	R-E
M-2	R-H
M-3	R-M
M-H	R-P
M-H-C	S-A
MAZ - 1	