

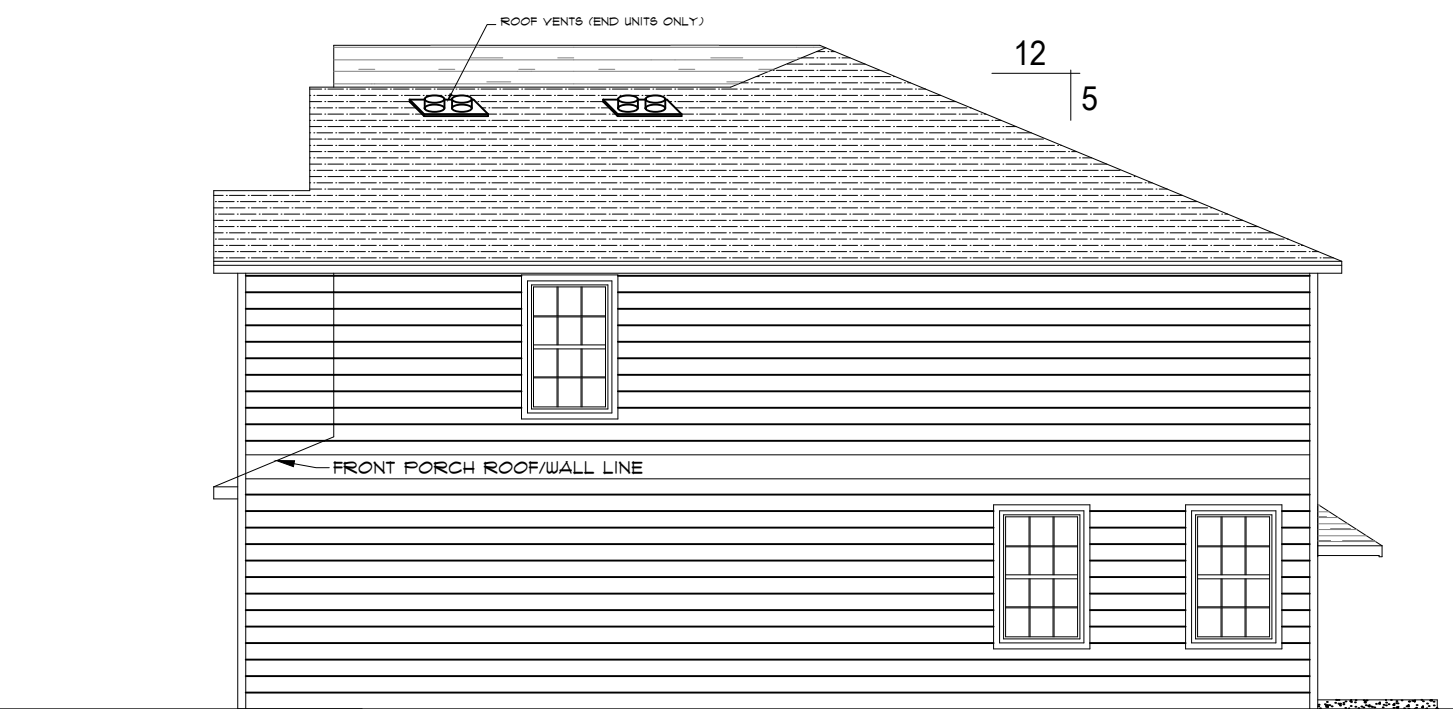


FRONT ELEVATION
1/4" = 1'-0"

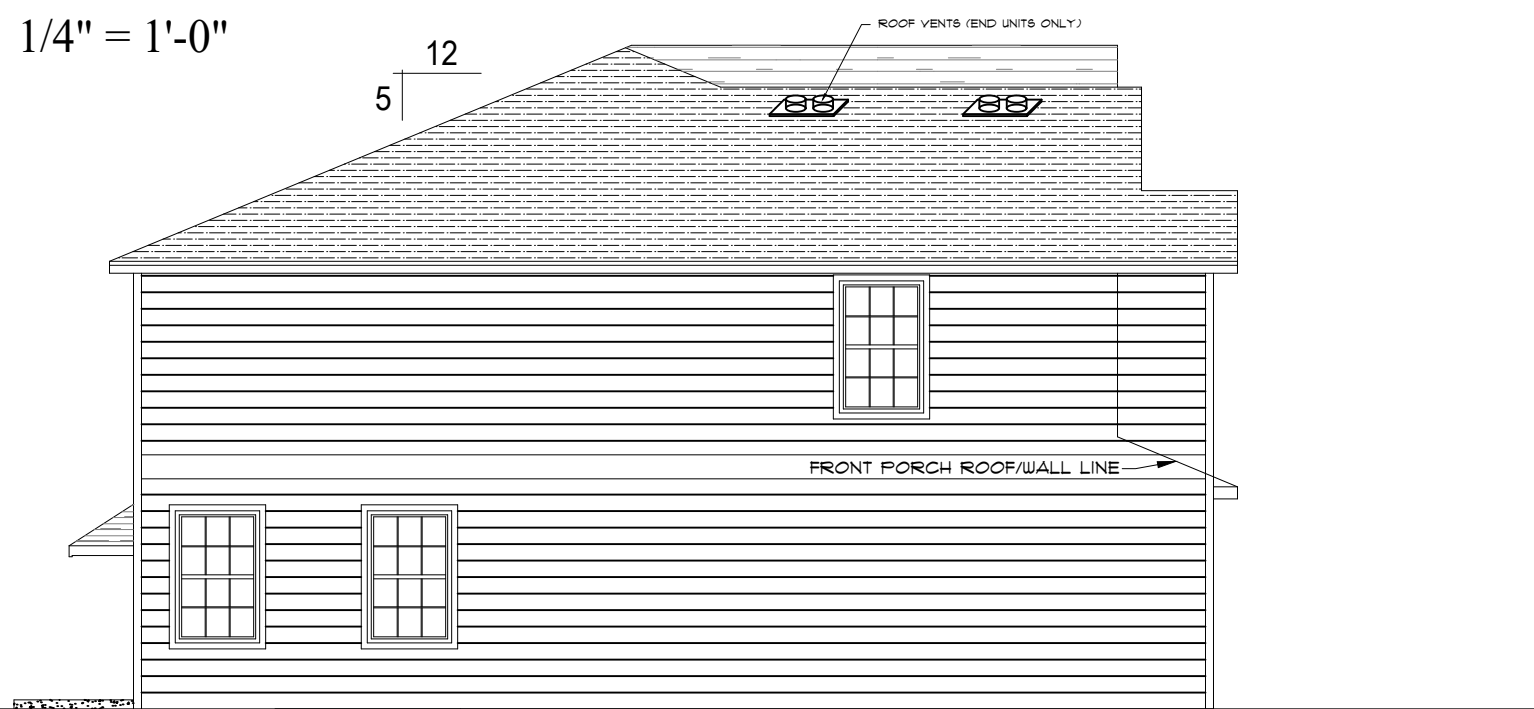


REAR ELEVATION
1/4" = 1'-0"

OFF RIDGE ROOF VENT (R.V.) CALCULATIONS FOR END UNITS ONLY
SQUARE FEET UNDER ROOF: 900 sq ft
TOTAL VENT AREA REQUIRED: 308 sq ft = 3.0 sq ft = 432 sq inches
432 sq inches Total venting required between soffit and upper roof with minimum of 40% in upper roof
Using the 40-50% rule for having roof vents installed within 3'-0" of roof ridge
432 (0.40) = 172.8 sq. in. required
We are using off ridge vents-- Lamanco T10-D Roof Louver, 140 sq in Net Free Area
140 sq in X 2 units = 280 sq. in. Net Free Area Installed

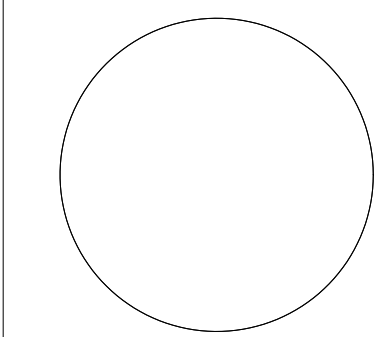


RIGHT SIDE ELEVATION
1/8" = 1'-0"



LEFT SIDE ELEVATION
1/8" = 1'-0"

5 Plex
Units: 1 thru 5



D-R HORTON
America's Builder

Parkview Townhomes
City of Lynn Haven, FL

Date: 03-22-2019
Scale: As Noted
REVISIONS:

A1.0