

RIGHT - OF - WAY TRACT NUMBERS RODDAGE	<div style="display: flex; justify-content: space-between;"> <span>HCL-FL-OS-070.000</span> <span>HCL-FL-OS-070.500.RC</span> <span>HCL-FL-OS-072.000</span> <span>HCL-FL-OS-073.000</span> <span>HCL-FL-OS-074.000</span> <span>HCL-FL-OS-076.000</span> <span>HCL-FL-OS-076.005</span> <span>HCL-FL-OS-076.000</span> <span>HCL-FL-OS-076.500.RC</span> <span>HCL-FL-OS-077.000</span> </div>											
	<div style="display: flex; justify-content: space-between;"> <span>25.4</span> <span>12.2</span> <span>16.3</span> <span>39.0</span> <span>148.2</span> <span>1.5</span> <span>35.3</span> <span>9.8</span> <span>11.9</span> <span>31.7</span> </div>											
SURVEY DATA SURVEY COMPANY: FIELD BOOK: PAGES:	<p>603+00 METR. GATE, 33' LT. 604+40 FENCE CORNER, 28' LT. 606+72 P.I. 2.20' 30' 32.1' LT. 607+34 FENCED POWERLINE 607+25 FENCED POWERLINE 607+18 FENCED POWERLINE 607+10 FENCED POWERLINE 606+40 CL. JOHN YOUNG PARKWAY 606+30 CL. JOHN YOUNG PARKWAY 606+20 CL. JOHN YOUNG PARKWAY 605+54 FENCE CORNER, 28' LT. 605+44 FENCE CORNER, 28' LT. 605+34 FENCE CORNER, 28' LT. 605+24 FENCE CORNER, 28' LT. 605+14 FENCE CORNER, 28' LT. 604+40 FENCE CORNER, 28' LT. 603+00 METR. GATE, 33' LT.</p>											
CLASS LOCATION	CLASS 3											
MINIMUM DEPTH OF COVER	3'											
PIPE MATERIAL	<div style="display: flex; justify-content: space-between;"> <span>372</span> <span>41'</span> <span>213'</span> <span>82'</span> <span>1791'</span> <span>213'</span> <span>302'</span> <span>1153'</span> <span>228'</span> <span>702'</span> <span>82'</span> <span>238'</span> <span>492'</span> </div>											
ALIGNMENT DETAIL	<div style="display: flex; justify-content: space-between;"> <span>23 GPW, 19' C-C</span> <span>54 GPW, 19' C-C</span> <span>99 GPW, 19' C-C</span> <span>26 GPW, 19' C-C</span> </div>											

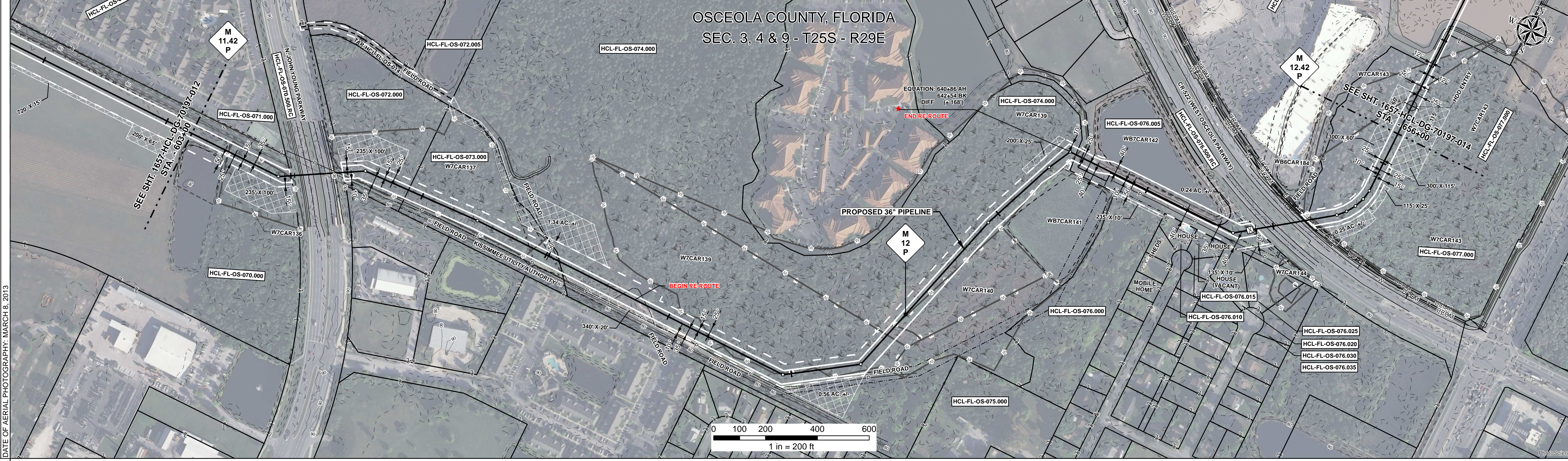
### ALIGNMENT DETAIL

PROPOSED PIPELINE  
PROPOSED PERMANENT EASEMENT  
TEMP WORKSPACE  
ADD. TEMP WORKSPACE  
EASEMENT LINE  
CL STREAM/CREEK/DITCH  
EDGE OF WATER  
CL LEVEE  
FIELD DELINEATED WETLAND  
STREAM/DRAIN/WATERBODY BNDRY  
CL ROAD  
EDGE OF ROAD/PAVEMENT/CURB  
CL CULVERT  
CL RAILROAD  
ACCESS ROAD (PAR/TAR)  
STRUCTURE  
CONTOUR MAJOR (EVERY 10')  
CONTOUR MINOR (EVERY 2')  
PIPELINE MILEPOST  
PIPELINE MILEPOST 10TH  
PROPERTY LINE  
UNDERGROUND WATERLINE  
UNDERGROUND COM. CABLE  
UNDERGROUND POWERLINE  
UNDERGROUND SANITARY SEWER  
OVERHEAD POWERLINE  
OVERHEAD TELEPHONE  
VERIFIED PIPELINE  
FENCE  
TOP / TOE

TRANS. TOWER  
GUY ANCHOR  
HDD ENTRY/EXIT  
FIRE HYDRANT  
UTILITY POLE  
AERIAL MARKER  
ELEC. WATER, SAN. SEWER, GAS  
TELE. & STORM DRAIN MANHOLES

WELL  
SEPTIC  
VALVE  
METER  
SPREAD BREAK

DATE OF AERIAL PHOTOGRAPHY: MARCH 8, 2013



REFERENCE DRAWING	HCL-FL-OS-070.500.RC											
ENVIRONMENTAL SURVEY DATA	1657-PL-DG-32500 HCL-FL-OS-076.500.RC											

SENSITIVE AREAS	603+00	604+57	W7CAR136 PFO	607+10	609+29	W7CAR137 PFO	617+23	624+74	W7CAR139 PFO	627+87	W7CAR139 PFO	W7CAR140 PFO	634+19	W7CAR139 PFO	641+13	644+34	649+72	649+80	650+77	650+99	W7CAR143 PFO	656+00
	6a, 6b, 8, 16, 18	8, 16, 18		6a, 6b, 8, 16, 18	6a, 6b, 8, 16, 18	8, 16, 18	8, 15, 16, 18	6a, 6b, 8, 15, 16, 18	8, 16, 18	8, 12, 16, 18	8, 12, 16, 18		8, 16, 18	6a, 6b, 8, 16, 18	6a, 6b, 8, 16, 18	6a, 6b, 8, 16, 18	6a, 6b, 8, 16, 18	6a, 6b, 8, 16, 18	6a, 6b, 8, 16, 18	8, 16, 18		

### PROFILE

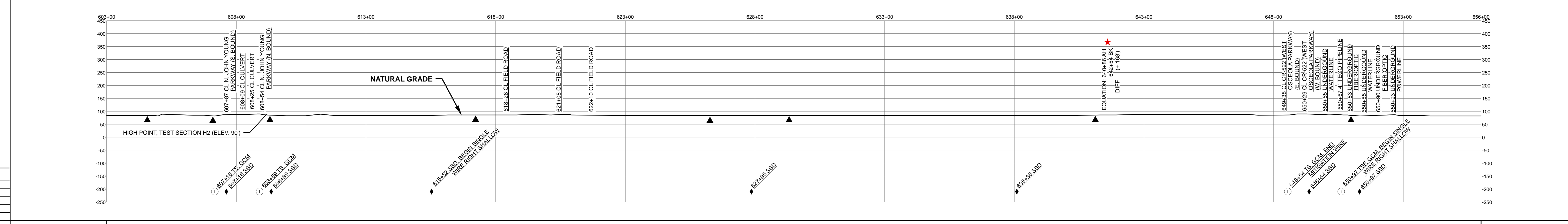
SCALE:  
HORIZONTAL: 1" = 200'  
VERTICAL: 1" = 200'

THE LOCATION OF TRENCH PLUGS AND SLOPE BREAKERS ARE INTENDED TO BE USED AS A GUIDELINE ONLY. EXACT LOCATION TO BE DETERMINED IN THE FIELD AS DIRECTED BY THE CHIEF INSPECTOR.

SLOPE BREAKERS/ARROW INDICATES DIRECTION

TRENCH PLUG  
CP TEST STATION  
RECTIFIER  
DECOUPLER

SLOPE BREAKER & TRENCH PLUG SPACING		
CODE	% SLOPE	SPACING
A	< 5%	NO STRUCTURE
B	5 - 15%	300 FT
C	15 - 30%	200 FT
D	> 30%	100 FT



HYDROSTATIC TEST SECTION				REVISIONS				MATERIALS				ENGINEERING APPROVALS				SABAL TRAIL PROJECT PROPOSED 36" HUNTERS CREEK PIPELINE STA. 603+00 TO STA. 656+00 ALIGNMENT SHEET				Sabal Trail TRANSMISSION										
DWG. NO.	DESCRIPTION			REV	DRN	DATE	DESCRIPTION	ITEM NO.	DESCRIPTION			QTY	TITLE		SIGNATURE		DATE		LOC.		YEAR		SHEET		SCALE		DWG.		REV.	
				0		06/29/2015	ISSUED FOR BID	3	36" O.D. x 0.750" W.T., API 5L X70, FBE 16 MILS w/I.D. EPOXY 1.7 MILS			5017 LF	FRS		06/29/2015		FRS		OSCEOLA COUNTY, FLORIDA		2017		13 OF 14		1" = 200'		1657-HCL-DG-70197-013		2	
				1		03/14/2016	ISSUED FOR CONSTRUCTION	4	36" O.D. x 0.750" W.T., API 5L X70, FBE 16 MILS, ARO 24 MILS, w/I.D. EPOXY 1.7 MILS			451 LF	GIE		01/04/2016		GIE													
				2		03/23/2016	REVISED FOR REROUTE	3R	3R ELBOW, HIGH STRENGTH WROUGHT BUTT-WELD FITTING, 36" O.D.			6 EA	FRS		06/29/2015		FRS													
								GPW	GEOTEXTILE PIPE WEIGHT, 9000 LBS			202 EA	GIE		06/29/2015		JC													

Document Path: H:\GIS\1657\Deliverables\Alignment\Sheets\1657-HCL-DG-70197-013.mxd