

RIGHT - OF - WAY	CLASS 1		CLASS 2		CLASS 1	
TRACT NUMBERS	20780+00		20807+12		20833+00	
RODDAGE	164.3		156.9			
SURVEY DATA	SURVEY COMPANY: FIELD BOOK: PAGES:					
CLASS LOCATION	CLASS 1: 20780+47 CLASS 2: 20807+12 CLASS 1: 20833+00					
MINIMUM DEPTH OF COVER	5' 10' 5'					
PIPE MATERIAL	2700' 40' 80' 1241' 80' 1152'					
ALIGNMENT DETAIL	SR -SR, FITTING SET ON WEIGHT, GPW, GEOTEXTILE PIPE WEIGHT					

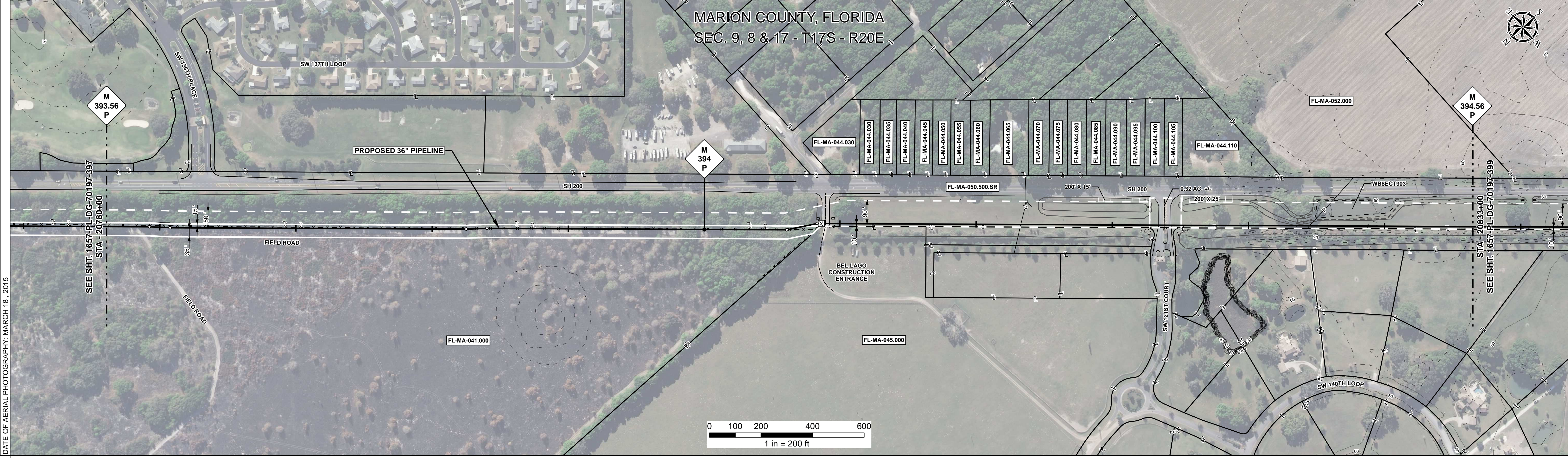
ALIGNMENT DETAIL

DATE OF AERIAL PHOTOGRAPHY: MARCH 18, 2015

PROPOSED PIPELINE
 PROPOSED PERMANENT EASEMENT
 TEMP WORKSPACE
 ADD. TEMP. WORKSPACE
 EASEMENT LINE
 CL STREAM/CREEK/DITCH
 EDGE OF WATER
 CL LEVEE
 FIELD DELINEATED WETLAND
 STREAM/DRAIN/WATERBODY BNDRY
 CL ROAD
 EDGE OF ROAD/PAVEMENT/CURB
 CL CULVERT
 CL RAILROAD
 ACCESS ROAD (PAR/TAR)
 STRUCTURE
 CONTOUR MAJOR (EVERY 10')
 CONTOUR MINOR (EVERY 2')
 PIPELINE MILEPOST
 PIPELINE MILEPOST 10TH
 PROPERTY LINE
 UNDERGROUND WATERLINE
 UNDERGROUND COM. CABLE
 UNDERGROUND POWERLINE
 UNDERGROUND SANITARY SEWER
 OVERHEAD POWERLINE
 OVERHEAD TELEPHONE
 VERIFIED PIPELINE
 FENCE
 TOP / TOE

TRANS. TOWER
 GUY ANCHOR
 HDD ENTRY/EXIT
 FIRE HYDRANT
 UTILITY POLE
 AERIAL MARKER
 ELEC. WATER, SAN. SEWER, GAS
 TELE. & STORM DRAIN MANHOLES

WELL
 SEPTIC
 VALVE
 METER
 SPREAD BREAK



REFERENCE DRAWING

ENVIRONMENTAL SURVEY DATA

SENSITIVE AREAS

6a, 6b, 8, 15, 16, 18

6a, 6b, 8, 16, 18

PROFILE

SCALE:
 HORIZONTAL: 1" = 200'
 VERTICAL: 1" = 200'

THE LOCATION OF TRENCH PLUGS AND SLOPE BREAKERS ARE INTENDED TO BE USED AS A GUIDELINE ONLY. EXACT LOCATION TO BE DETERMINED IN THE FIELD AS DIRECTED BY THE CHIEF INSPECTOR.

SLOPE BREAKERS/ARROW INDICATES DIRECTION

TRENCH PLUG

CP TEST STATION

RECTIFIER

DECOUPLER

SLOPE BREAKER & TRENCH PLUG SPACING

CODE	% SLOPE	SPACING
A	< 5%	NO STRUCTURE
B	5 - 15%	300 FT
C	15 - 30%	200 FT
D	> 30%	100 FT

HYDROSTATIC TEST SECTION

REFERENCE DRAWINGS

REVISIONS

MATERIALS



REV	DRN	DATE	DESCRIPTION	ITEM NO.	DESCRIPTION	QTY
0		06/29/2015	ISSUED FOR BID	1	36" O.D. x 0.520" W.T., API 5L X70, FBE 16 MILS w/I.D. EPOXY 1.7 MILS	7 LF
1		03/14/2016	ISSUED FOR CONSTRUCTION	2	36" O.D. x 0.625" W.T., API 5L X70, FBE 16 MILS w/I.D. EPOXY 1.7 MILS	2700 LF
				3	36" O.D. x 0.750" W.T., API 5L X70, FBE 16 MILS w/I.D. EPOXY 1.7 MILS	2433 LF
				4	36" O.D. x 0.750" W.T., API 5L X70, FBE 16 MILS, ARO 24 MILS, w/I.D. EPOXY 1.7 MILS	160 LF

REFERENCE DRAWINGS		REVISIONS		MATERIALS		ENGINEERING APPROVALS	
DWG. NO.	DESCRIPTION	REV	DRN	DATE	DESCRIPTION	SIGNATURE	DATE

REFERENCE DRAWINGS		REVISIONS		MATERIALS		ENGINEERING APPROVALS	
DWG. NO.	DESCRIPTION	REV	DRN	DATE	DESCRIPTION	SIGNATURE	DATE

REFERENCE DRAWINGS		REVISIONS		MATERIALS		ENGINEERING APPROVALS	
DWG. NO.	DESCRIPTION	REV	DRN	DATE	DESCRIPTION	SIGNATURE	DATE

REFERENCE DRAWINGS		REVISIONS		MATERIALS		ENGINEERING APPROVALS	
DWG. NO.	DESCRIPTION	REV	DRN	DATE	DESCRIPTION	SIGNATURE	DATE