

RIGHT - OF - WAY	CROSSING																	
TRACT NUMBERS	GWA-FL-SUW-223.000		GWA-FL-SUW-224.000		GWA-FL-SUW-225.000		GWA-FL-SUW-226.000		GWA-FL-SUW-227.000		GWA-FL-SUW-228.000		GWA-FL-SUW-229.200		GWA-FL-SUW-232.001.CR		GWA-FL-SUW-233.000	
RODDAGE	16169+00	16176+92	16183+46	16189+99	16196+46	16203+33	16209+76	16216+05	16222+00	16228+00	16234+00	16240+00	16246+00	16252+00	16258+00	16264+00	16270+00	16276+00
SURVEY DATA	SURVEY COMPANY: FIELD BOOK: PAGES: 16176+92 FENCE CORNER, 32 FT. 16177+72 WATER WELL, 14 FT. 16203+40 FENCE 16203+71 FENCE CORNER, 30 FT. 16203+37 GUY ANCHOR, 1 FT. 16204+00 OVERHEAD POWERLINE (DUNE ENERGY) 16204+00 OVERHEAD POWER POLE, 32 FT. 16207+88 POWER POLE, 35 FT. 16207+89 FENCE CORNER, 15 FT. 16207+89 OVERHEAD POWERLINE 16207+89 POWER POLE, 32 FT. 16209+88 OVERHEAD POWERLINE 16209+88 POWER POLE, 32 FT. 16210+04 OVERHEAD POWERLINE 16210+04 FENCE CORNER, 13 FT. 16210+13 FENCE CORNER, 30 FT. 16217+49 FENCE CORNER, 34 FT. 16217+49 OVERHEAD POWERLINE (DUNE ENERGY) 16217+49 EDGE OF ROAD 16217+74 CL. EDGE OF ROAD 16217+74 FENCE CORNER, 22 FT. 16218+00 FENCE CORNER, 22 FT. 16218+00 FENCE CORNER, 30 FT. 16218+00 FENCE CORNER, 30 FT.																	
CLASS LOCATION	CLASS 1																	
MINIMUM DEPTH OF COVER	3'																	
PIPE MATERIAL	- 3R, FITTING																	
	SET ON WEIGHT, GPW, GEOTEXTILE PIPE WEIGHT																	

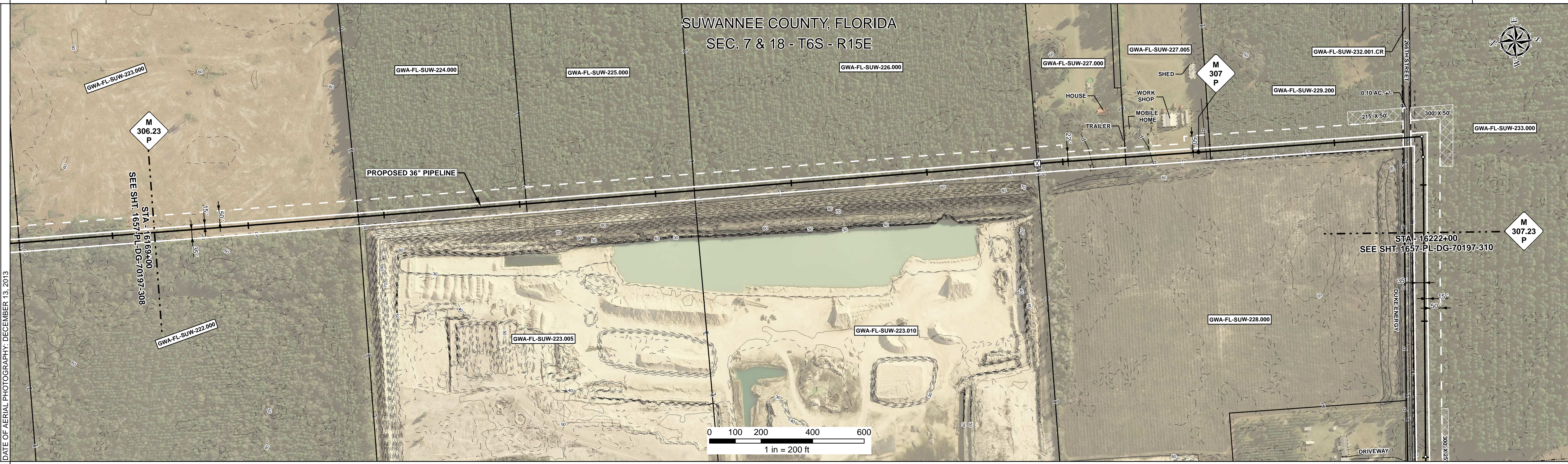
### ALIGNMENT DETAIL

DATE OF AERIAL PHOTOGRAPHY: DECEMBER 13, 2013

- PROPOSED PIPELINE
- PROPOSED PERMANENT EASEMENT
- TEMP WORKSPACE
- ADD. TEMP. WORKSPACE
- EASEMENT LINE
- CL STREAM/CREEK/DITCH
- EDGE OF WATER
- CL LEVEE
- FIELD DELINEATED WETLAND
- STREAM/DRAIN/WATERBODY BNDRY
- CL ROAD
- EDGE OF ROAD/PAVEMENT/CURB
- CL CULVERT
- CL RAILROAD
- ACCESS ROAD (PAR/TAR)
- STRUCTURE
- CONTOUR MAJOR (EVERY 10')
- CONTOUR MINOR (EVERY 2')
- PIPELINE MILEPOST
- PIPELINE MILEPOST 10TH
- PROPERTY LINE
- UNDERGROUND WATERLINE
- UNDERGROUND COM. CABLE
- UNDERGROUND POWERLINE
- UNDERGROUND SANITARY SEWER
- OVERHEAD POWERLINE
- OVERHEAD TELEPHONE
- VERIFIED PIPELINE
- FENCE
- TOP / TOE

TRANS. TOWER  
GUY ANCHOR  
HDD ENTRY/EXIT  
FIRE HYDRANT  
UTILITY POLE  
AERIAL MARKER  
ELEC., WATER, SAN. SEWER, GAS TELE. & STORM DRAIN MANHOLES

WELL  
SEPTIC  
VALVE  
METER  
SPREAD BREAK



### REFERENCE DRAWING

ENVIRONMENTAL SURVEY DATA

### SENSITIVE AREAS

16169+00	16174+00	16179+00	16184+00	16189+00	16194+00	16199+00	16204+00	16209+00	16214+00	16219+00	16224+00	
6a, 6b, 8, 15, 16, 18							16203+25	6a, 6b, 8, 15, 16, 18	16207+81	6a, 6b, 8, 15, 16, 18	16217+89	6a, 6b, 8, 15, 16, 18

### PROFILE

SCALE:  
HORIZONTAL: 1" = 200'  
VERTICAL: 1" = 200'

THE LOCATION OF TRENCH PLUGS AND SLOPE BREAKERS ARE INTENDED TO BE USED AS A GUIDELINE ONLY. EXACT LOCATION TO BE DETERMINED IN THE FIELD AS DIRECTED BY THE CHIEF INSPECTOR.

SLOPE BREAKERS/ARROW INDICATES DIRECTION

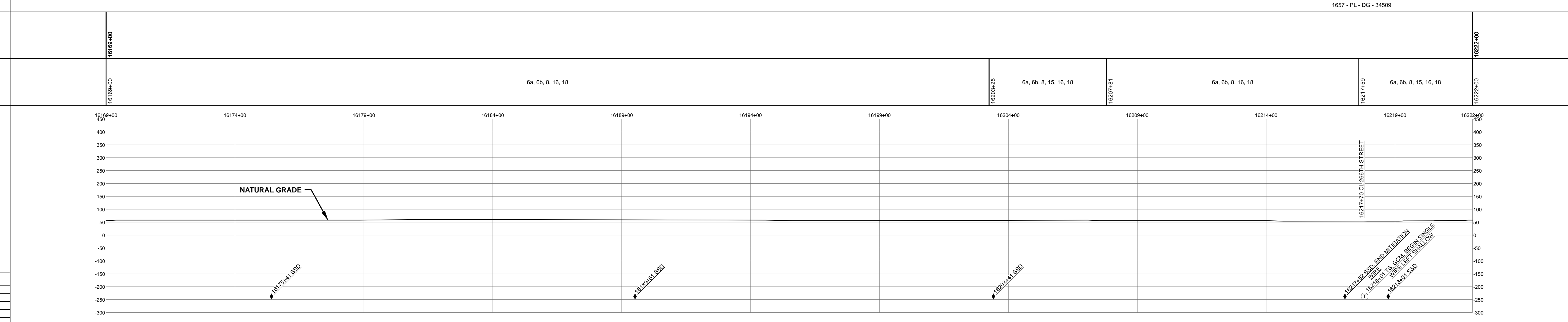
TRENCH PLUG

CP TEST STATION

RECTIFIER

DECOUPLER

CODE	% SLOPE	SPACING
A	< 5%	NO STRUCTURE
B	5 - 15%	300 FT
C	15 - 30%	200 FT
D	> 30%	100 FT



### HYDROSTATIC TEST SECTION

DWG. NO.	DESCRIPTION	REV	DRN	DATE	DESCRIPTION	ITEM NO.	DESCRIPTION	QTY
		0		06/29/2015	ISSUED FOR BID	1	36" O.D. x 0.520" W.T., API 5L X70, FBE 16 MILS w/I.D. EPOXY 1.7 MILS	5259 LF
		1		03/14/2016	ISSUED FOR CONSTRUCTION	4	36" O.D. x 0.750" W.T., API 5L X70, FBE 16 MILS, ARO 24 MILS, w/I.D. EPOXY 1.7 MILS	41 LF
						3R	3R ELBOW, HIGH STRENGTH WROUGHT BUTT-WELD FITTING, 36" O.D.	1 EA

### REVISIONS

REV	DRN	DATE	DESCRIPTION
0		06/29/2015	ISSUED FOR BID
1		03/14/2016	ISSUED FOR CONSTRUCTION

### MATERIALS

ITEM NO.	DESCRIPTION	QTY
1	36" O.D. x 0.520" W.T., API 5L X70, FBE 16 MILS w/I.D. EPOXY 1.7 MILS	5259 LF
4	36" O.D. x 0.750" W.T., API 5L X70, FBE 16 MILS, ARO 24 MILS, w/I.D. EPOXY 1.7 MILS	41 LF
3R	3R ELBOW, HIGH STRENGTH WROUGHT BUTT-WELD FITTING, 36" O.D.	1 EA

### ENGINEERING APPROVALS

TITLE		SIGNATURE		DATE	
DRAWN BY:	GIE	FSR	06/29/2015	FSR	03/14/2016
DRN. DATE:	01/04/2016				
CHECKED BY:	GIE	DRS	06/29/2015	JC	03/14/2016
CHK. DATE:					

### SABAL TRAIL PROJECT

#### PROPOSED 36" PIPELINE

#### STA. 16169+00 TO STA. 16222+00

#### ALIGNMENT SHEET

LOC. SUWANNEE COUNTY, FLORIDA

YEAR: 2017 SHEET: 309 OF 492 SCALE: 1" = 200' DWG. 1657-PL-DG-70197-309 REV. 1

Document Path: H:\GIS\1657-Deliverables\Alignment\Sheets\1657-PL-DG-70197-309.mxd