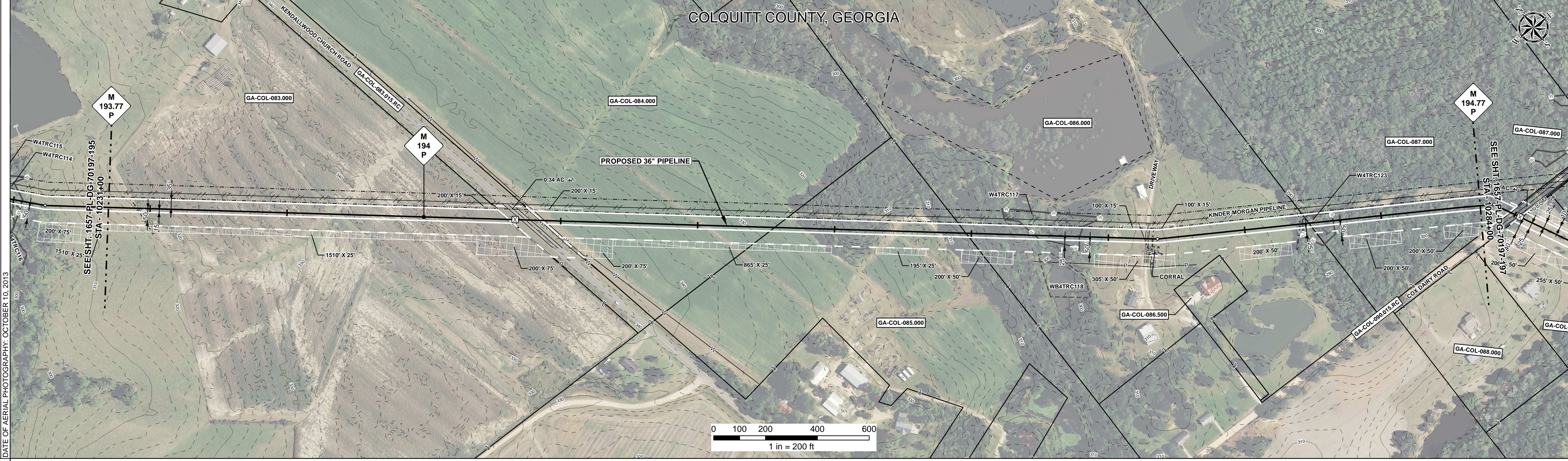
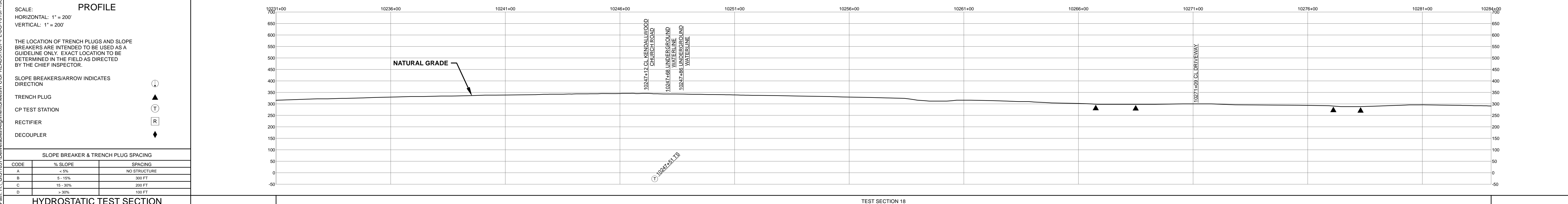


RIGHT - OF - WAY	TRACT NUMBERS	GA-COL-083.000	GA-COL-083.015.RC	GA-COL-084.000	GA-COL-085.000	GA-COL-086.000	GA-COL-087.000	
	RODDAGE	10231+00	10246+48	10247+74	10256+73	10264+11	10277+36	10284+00
SURVEY DATA	SURVEY COMPANY:							
	FIELD BOOK:							
PAGES:		10231+00	10246+48	10247+74	10256+73	10264+11	10277+36	10284+00
CLASS LOCATION		CLASS 1					10276+71	CLASS 2
MINIMUM DEPTH OF COVER		3'	4'	5'	4'	3'	5'	3'
PIPE MATERIAL		①	④	①	①	①	②	
ALIGNMENT DETAIL								



REFERENCE DRAWING	1657-PL-DG-34501						
ENVIRONMENTAL SURVEY DATA	10231+00	10246+48	10247+74	10256+73	10264+11	10277+36	10284+00

SENSITIVE AREAS	10231+00	6a, 6b, 8, 18	10246+48	6a, 6b, 8, 18	10247+74	6a, 6b, 8, 18	10256+73	6a, 6b, 8, 18	10264+11	6a, 6b, 8, 18	10277+36	6a, 6b, 8, 18	10284+00
-----------------	----------	---------------	----------	---------------	----------	---------------	----------	---------------	----------	---------------	----------	---------------	----------



HYDROSTATIC TEST SECTION			REVISIONS			MATERIALS			ENGINEERING APPROVALS				SABAL TRAIL PROJECT PROPOSED 36" PIPELINE STA. 10231+00 TO STA. 10284+00 ALIGNMENT SHEET							
DWG. NO.	DESCRIPTION	REV	DRN	DATE	DESCRIPTION	ITEM NO.	DESCRIPTION	QTY	TITLE	SIGNATURE	DATE	SIGNATURE	DATE	LOC.	YEAR	SHEET	SCALE	DWG.	REV.	
		0		06/29/2015	ISSUED FOR BID	1	36" O.D. x 0.520" W.T., API 5L X70, FBE 16 MILS w/I.D. EPOXY 1.7 MILS	4352 LF						COLQUITT COUNTY, GEORGIA	2017	196 OF 492	1" = 200'	1657-PL-DG-70197-196	1	
		1		03/14/2016	ISSUED FOR CONSTRUCTION	2	36" O.D. x 0.625" W.T., API 5L X70, FBE 16 MILS w/I.D. EPOXY 1.7 MILS	769 LF												
						4	36" O.D. x 0.750" W.T., API 5L X70, FBE 16 MILS, ARO 24 MILS, w/I.D. EPOXY 1.7 MILS	179 LF												
							GPW	GEOTEXTILE PIPE WEIGHT, 9000 LBS	35 EA											

Document Path: H:\GIS\1657\Deliverables\Alignment\Sheets\1657-PL-DG-70197-196.mxd