

RIGHT - OF - WAY	CROSSING	GA-WE-087.000	GA-WE-088.015	GA-WE-088.000	GA-WE-088.001.CR	GA-WE-088.005	GA-WE-088.006.CR	GA-WE-089.000	GA-WE-090.000	GA-WE-092.000	GA-WE-092.001.CR	GA-WE-092.000	
TRACT NUMBERS		6238+00	6243+00	6248+00	6253+00	6258+00	6263+00	6268+00	6273+00	6278+00	6283+00	6288+00	6291+00
RODDAGE		32.9	5.3	78.7	5.3	14.8	5.0	95.5	22.3	37.5	2.2	26.9	
SURVEY DATA		SURVEY COMPANY: FIELD BOOK: PAGES:											
CLASS LOCATION		CLASS 1											
MINIMUM DEPTH OF COVER		3'	5'	4'	5'	3'	5'	4'	5'	4'	5'	4'	
PIPE MATERIAL		1826' ① 120' ④ 221' ① 98' ④ 2549' ① 47' ④ 439' ①											
		6238+00 6243+00 6248+00 6253+00 6258+00 6263+00 6268+00 6273+00 6278+00 6283+00 6288+00 6291+00											

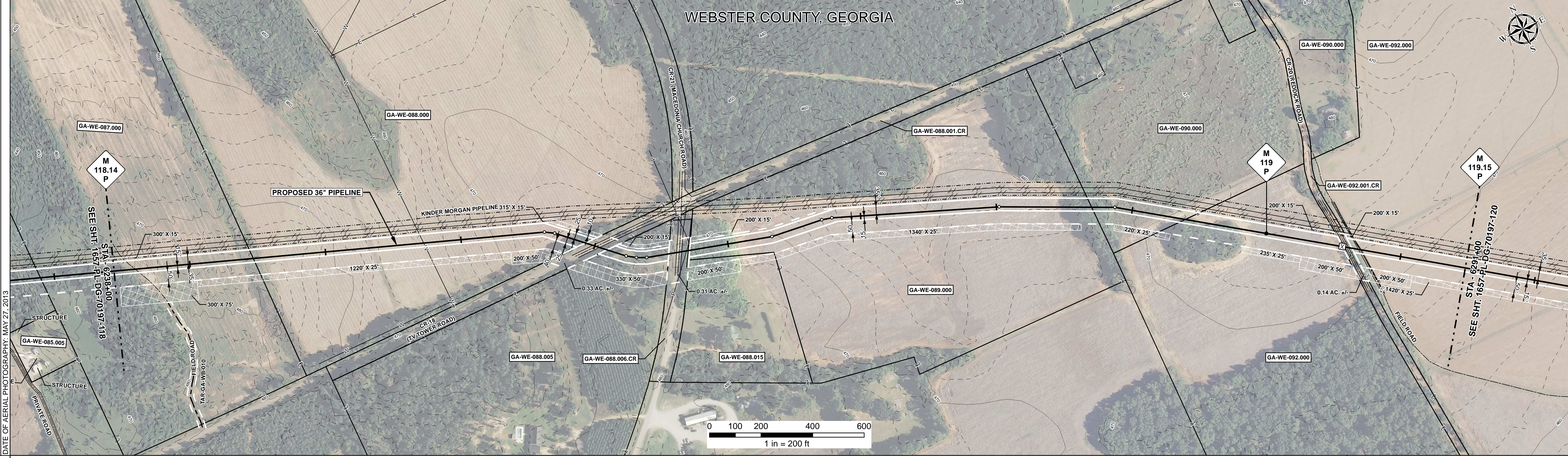
ALIGNMENT DETAIL

PROPOSED PIPELINE
 PROPOSED PERMANENT EASEMENT
 TEMP WORKSPACE
 ADD. TEMP. WORKSPACE
 EASEMENT LINE
 CL STREAM/CREEK/DITCH
 EDGE OF WATER
 CL LEVEE
 FIELD DELINEATED WETLAND
 STREAM/DRAIN/WATERBODY BNDRY
 CL ROAD
 EDGE OF ROAD/PAVEMENT/CURB
 CL CULVERT
 CL RAILROAD
 ACCESS ROAD (PAR/TAR)
 STRUCTURE
 CONTOUR MAJOR (EVERY 10')
 CONTOUR MINOR (EVERY 2')
 PIPELINE MILEPOST
 PIPELINE MILEPOST 10TH
 PROPERTY LINE
 UNDERGROUND WATERLINE
 UNDERGROUND COM. CABLE
 UNDERGROUND POWERLINE
 UNDERGROUND SANITARY SEWER
 OVERHEAD POWERLINE
 OVERHEAD TELEPHONE
 VERIFIED PIPELINE
 FENCE
 TOP / TOE

TRANS. TOWER
 GUY ANCHOR
 HDD ENTRY/EXIT
 FIRE HYDRANT
 UTILITY POLE
 AERIAL MARKER
 ELEC. WATER, SAN. SEWER, GAS
 TELE. & STORM DRAIN MANHOLES

WELL
 SEPTIC
 VALVE
 METER
 SPREAD BREAK

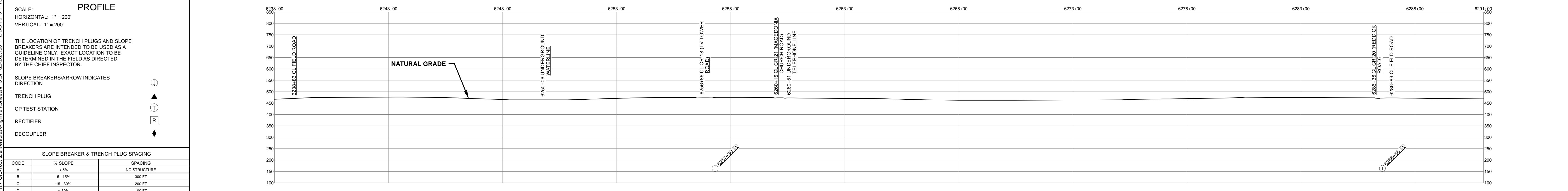
DATE OF AERIAL PHOTOGRAPHY: MAY 27, 2013



REFERENCE DRAWING	1657-PL-DG-34514	1657-PL-DG-34514	1657-PL-DG-34517
-------------------	------------------	------------------	------------------

ENVIRONMENTAL SURVEY DATA	6238+00	6291+00
---------------------------	---------	---------

SENSITIVE AREAS	6238+00	6291+00
-----------------	---------	---------



HYDROSTATIC TEST SECTION		REVISIONS		MATERIALS		ENGINEERING APPROVALS		SABAL TRAIL PROJECT PROPOSED 36" PIPELINE STA. 6238+00 TO STA. 6291+00 ALIGNMENT SHEET				
DWG. NO.	DESCRIPTION	REV	DRN	DATE	DESCRIPTION	ITEM NO.	DESCRIPTION	QTY	TITLE	SIGNATURE	DATE	CONSTRUCTION
		0		06/29/2015	ISSUED FOR BID	1	36" O.D. x 0.520" W.T., API 5L X70, FBE 16 MILS w/I.D. EPOXY 1.7 MILS	5035 LF				
		1		03/14/2016	ISSUED FOR CONSTRUCTION	4	36" O.D. x 0.750" W.T., API 5L X70, FBE 16 MILS, ARO 24 MILS, w/I.D. EPOXY 1.7 MILS	265 LF				
									LOC.	WEBSTER COUNTY, GEORGIA		
									YEAR:	2017	SHEET:	119 OF 492
									SCALE:	1" = 200'		
									DWG.	1657-PL-DG-70197-119	REV.	1

Document Path: H:\GIS\1657\Deliverables\Alignment\Sheets\1657-PL-DG-70197-119.mxd