

|                        |          |  |               |               |               |               |               |               |
|------------------------|----------|--|---------------|---------------|---------------|---------------|---------------|---------------|
| RIGHT - OF - WAY       | CROSSING | AL-LE-023.000  | AL-LE-025.000 | AL-LE-026.000 | AL-LE-027.000 | AL-LE-028.000 | AL-LE-029.000 | AL-LE-031.000 |
| TRACT NUMBERS          |          | 2438+00  | 2452+25       | 2458+86       | 2465+81       | 2472+07       | 2476+00       | 2489+00       |
| RODDAGE                |          | 98.5   | 40.7          | 41.5          | 37.9          | 6.8           | 4.2           | 15.3          |
| SURVEY DATA            |          | SURVEY COMPANY:<br>FIELD BOOK:<br>PAGES:   |               |               |               |               |               |               |
| CLASS LOCATION         |          | CLASS 1  |               |               |               |               |               |               |
| MINIMUM DEPTH OF COVER |          | 3'   |               |               |               |               |               |               |
| PIPE MATERIAL          |          | 287<br>2438+00<br>2438+67<br>2451+38<br>2453+11<br>3421'<br>2473+00<br>2473+49<br>1501'<br>2489+00 |               |               |               |               |               |               |

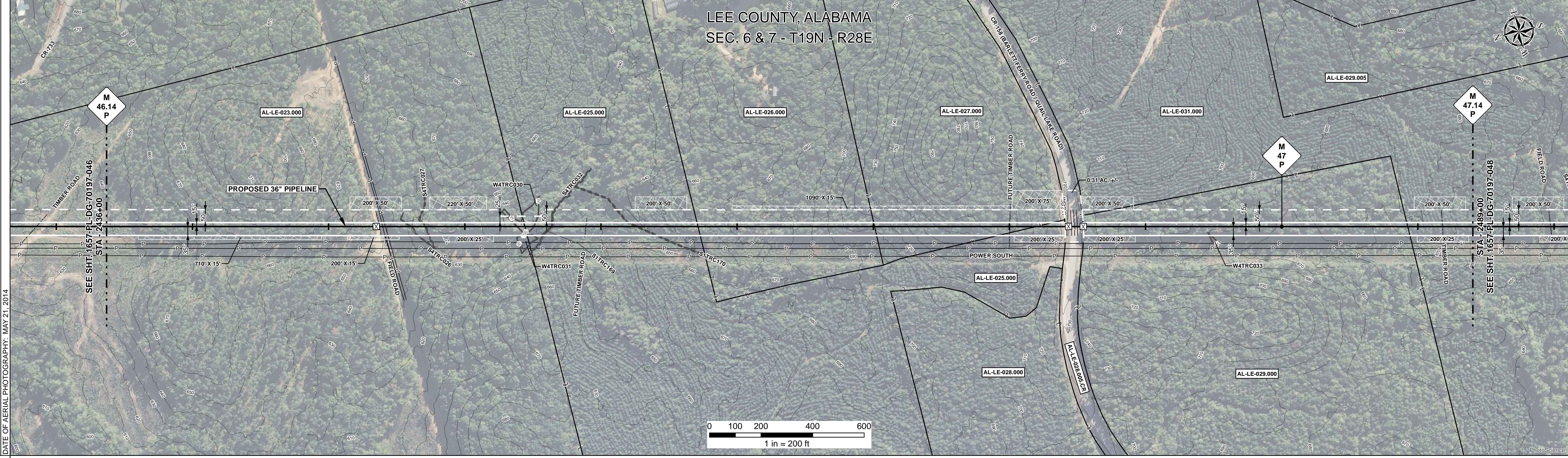
**ALIGNMENT DETAIL**

PROPOSED PIPELINE  
 PROPOSED PERMANENT EASEMENT  
 TEMP WORKSPACE  
 ADD. TEMP. WORKSPACE  
 EASEMENT LINE  
 CL STREAM/CREEK/DITCH  
 EDGE OF WATER  
 CL LEVEE  
 FIELD DELINEATED WETLAND  
 STREAM/DRAIN/WATERBODY BNDRY  
 CL ROAD  
 EDGE OF ROAD/PAVEMENT/CURB  
 CL CULVERT  
 CL RAILROAD  
 ACCESS ROAD (PAR/TAR)  
 STRUCTURE  
 CONTOUR MAJOR (EVERY 10')  
 PIPELINE MILEPOST  
 PIPELINE MILEPOST 10TH  
 PROPERTY LINE  
 UNDERGROUND WATERLINE  
 UNDERGROUND COM. CABLE  
 UNDERGROUND POWERLINE  
 UNDERGROUND SANITARY SEWER  
 OVERHEAD POWERLINE  
 OVERHEAD TELEPHONE  
 VERIFIED PIPELINE  
 FENCE  
 TOP / TOE

TRANS. TOWER  
 GUY ANCHOR  
 HDD ENTRY/EXIT  
 FIRE HYDRANT  
 UTILITY POLE  
 AERIAL MARKER  
 ELEC. WATER, SAN. SEWER, GAS  
 TELE. & STORM DRAIN MANHOLES

WELL  
 SEPTIC  
 VALVE  
 METER  
 SPREAD BREAK

DATE OF AERIAL PHOTOGRAPHY: MAY 21, 2014



|                   |                  |
|-------------------|------------------|
| REFERENCE DRAWING | AL-LE-028.005.CR |
|-------------------|------------------|

|                           |  |
|---------------------------|--|
| ENVIRONMENTAL SURVEY DATA | S4TRC026 S4TRC027 PFO WATRC030 S4TRC032 S1TRC170 |
|---------------------------|--|

|                 |        |
|-----------------|--------|
| SENSITIVE AREAS | 16, 18 |
|-----------------|--------|

**PROFILE**

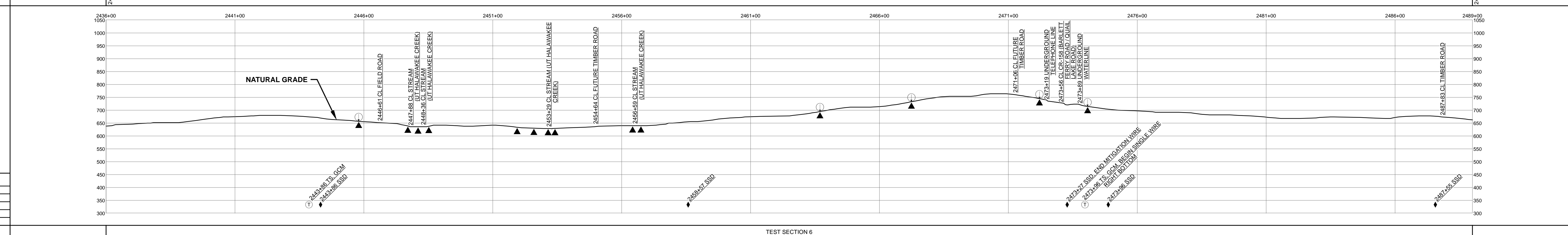
SCALE:  
 HORIZONTAL: 1" = 200'  
 VERTICAL: 1" = 200'

THE LOCATION OF TRENCH PLUGS AND SLOPE BREAKERS ARE INTENDED TO BE USED AS A GUIDELINE ONLY. EXACT LOCATION TO BE DETERMINED IN THE FIELD AS DIRECTED BY THE CHIEF INSPECTOR.

SLOPE BREAKERS/ARROW INDICATES DIRECTION

TRENCH PLUG  
 CP TEST STATION  
 RECTIFIER  
 DECOUPLER

| SLOPE BREAKER & TRENCH PLUG SPACING |          |              |
|-------------------------------------|----------|--------------|
| CODE                                | % SLOPE  | SPACING      |
| A                                   | < 5%     | NO STRUCTURE |
| B                                   | 5 - 15%  | 300 FT       |
| C                                   | 15 - 30% | 200 FT       |
| D                                   | > 30%    | 100 FT       |



**HYDROSTATIC TEST SECTION**

| DWG. NO. | DESCRIPTION | REV | DRN | DATE       | DESCRIPTION             | ITEM NO. | DESCRIPTION   | QTY     |
|----------|-------------|-----|-----|------------|-------------------------|----------|---|---------|
|          |             | 0   |     | 06/29/2015 | ISSUED FOR BID          | 1        | 36" O.D. x 0.520" W.T., API 5L X70, FBE 16 MILS w/I.D. EPOXY 1.7 MILS               | 4922 LF |
|          |             | 1   |     | 03/14/2016 | ISSUED FOR CONSTRUCTION | 2        | 36" O.D. x 0.625" W.T., API 5L X70, FBE 16 MILS w/I.D. EPOXY 1.7 MILS               | 287 LF  |
|          |             |     |     |            |                         | 4        | 36" O.D. x 0.750" W.T., API 5L X70, FBE 16 MILS, ARO 24 MILS, w/I.D. EPOXY 1.7 MILS | 91 LF   |
|          |             |     |     |            |                         | GPW      | GEOTEXTILE PIPE WEIGHT, 9000 LBS  | 13 EA   |

| REVISIONS |     |            |                         |          | MATERIALS   |         |  |
|-----------|-----|------------|-------------------------|----------|---|---------|--|
| REV       | DRN | DATE       | DESCRIPTION             | ITEM NO. | DESCRIPTION   | QTY     |  |
| 0         |     | 06/29/2015 | ISSUED FOR BID          | 1        | 36" O.D. x 0.520" W.T., API 5L X70, FBE 16 MILS w/I.D. EPOXY 1.7 MILS               | 4922 LF |  |
| 1         |     | 03/14/2016 | ISSUED FOR CONSTRUCTION | 2        | 36" O.D. x 0.625" W.T., API 5L X70, FBE 16 MILS w/I.D. EPOXY 1.7 MILS               | 287 LF  |  |
|           |     |            |                         | 4        | 36" O.D. x 0.750" W.T., API 5L X70, FBE 16 MILS, ARO 24 MILS, w/I.D. EPOXY 1.7 MILS | 91 LF   |  |
|           |     |            |                         | GPW      | GEOTEXTILE PIPE WEIGHT, 9000 LBS  | 13 EA   |  |

TEST SECTION 6

| ENGINEERING APPROVALS |            |              |            |
|-----------------------|------------|--------------|------------|
| TITLE                 |            | CONSTRUCTION |            |
| SIGNATURE             | DATE       | SIGNATURE    | DATE       |
| FRS                   | 06/29/2015 | FRS          | 03/14/2016 |
| DRN DATE:             | 01/04/2016 | CHECKED BY:  | DRS        |
| CHK. DATE:            |            |              | JC         |

**SABAL TRAIL PROJECT**  
**PROPOSED 36" PIPELINE**  
**STA. 2436+00 TO STA. 2489+00**  
**ALIGNMENT SHEET**

LOC. LEE COUNTY, ALABAMA

YEAR: 2017 SHEET: 47 OF 492 SCALE: 1" = 200' DWG. 1657-PL-DG-70197-047 REV. 1

Document Path: H:\GIS\1657-Deliverables\Alignment\Drawings\1657-PL-DG-70197-047.mxd