

Above Fargo Suwannee River Boat Ramps

From Griffis Fish Camp Landing to Fargo Ramp is too far for many paddlers: 14.35 miles.

So more boat ramps on the Suwannee River in between would be great.

Not counting private Reeves Landing and one other private landing, there are five landings on Nature Conservancy land in that stretch that could be turned into boat ramps.

1. The simple solution is to improve Drawdy Mill Landing, which is about halfway, and down a short access road.
2. Another solution would be to improve Sport Camp Landing, upstream of Drawdy Mill Landing, as well as Three Steps Landing downstream towards Fargo, thus dividing the long stretch up into thirds. A catch is that Three Steps Landing does not have a straight road back to GA 177.
 - a. A variant on solution 2 would be to improve Allen Camp Landing instead of Sport Camp Landing. However, Allen Camp Landing is quite close to Griffis Fish Camp, so it probably would not be as appropriate.

The landings here are named after their access roads or previous owners. I'm all ears for any better names for them.

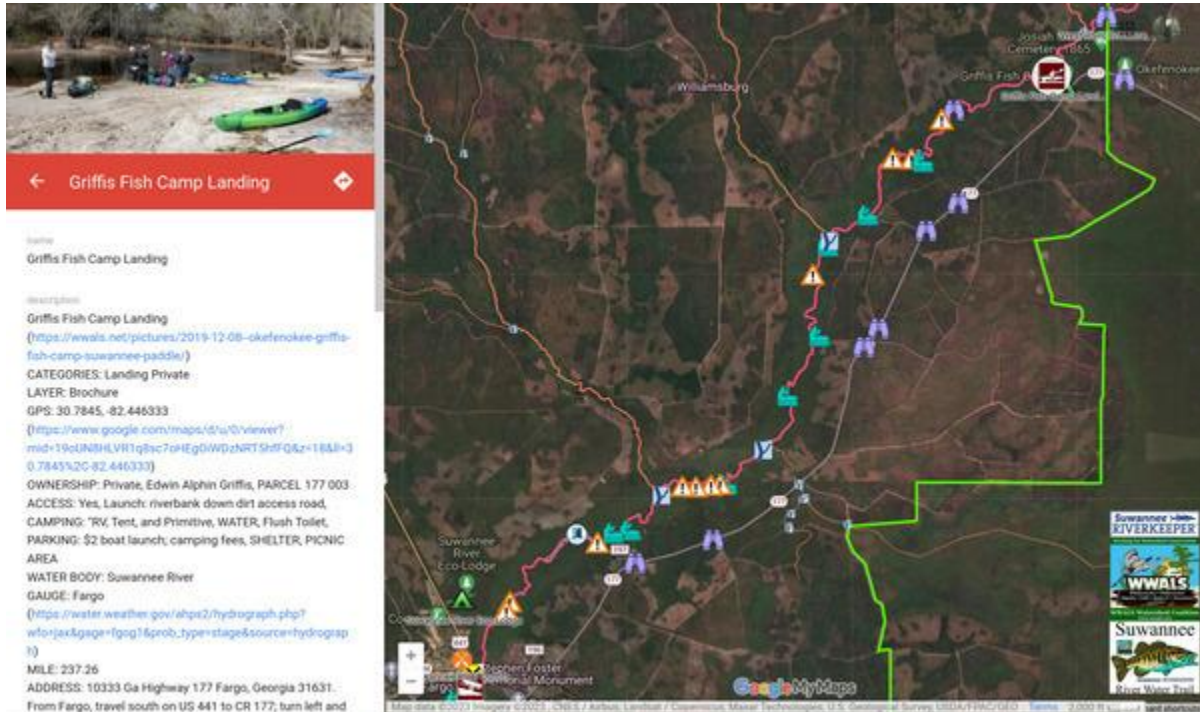
Under each map below is a link to the live map that was used to make the image. On the live map you can pan and zoom and click on icons to get more detail.

John S. Quarterman, Suwannee Riverkeeper, 229-242-0102, 229-560-4317 mobile

Griffis Fish Camp Landing:	2
Allen Camp Landing:	3
Sport Camp Landing:	4
Long Camp Landing:	5
Drawdy Mill Landing:	6
Three Steps Landing:	7
Fargo Ramp:	8

Griffis Fish Camp Landing:

The green line on this map is the boundary of the Okefenokee National Wildlife Refuge (ONWR). Griffis Fish Camp is highlighted by the white circle just to the left (downstream) of that line.

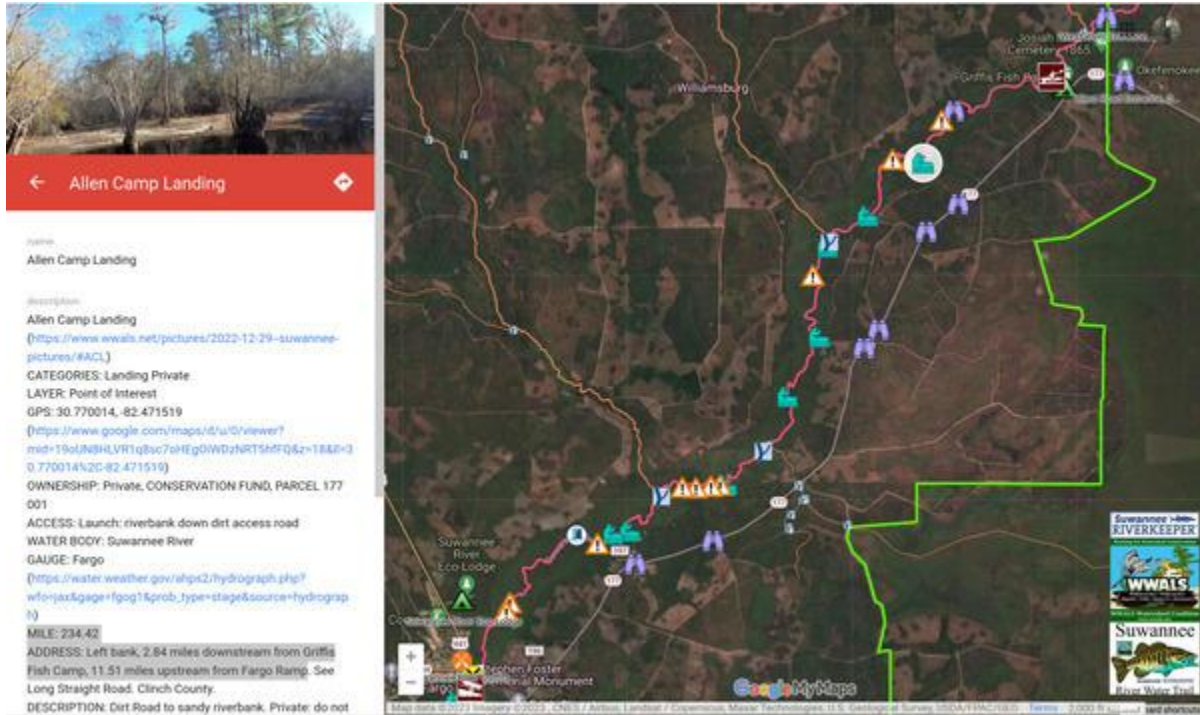


<https://www.google.com/maps/d/u/0/viewer?mid=19oUN8HLVR1q8sc7oHEgOiwDzNRT5hfFQ&ll=30.736971546209737%2C-82.49656979392364&z=13>

MILE: 237.26; 14.35 miles upstream from Fargo Ramp.

Allen Camp Landing:

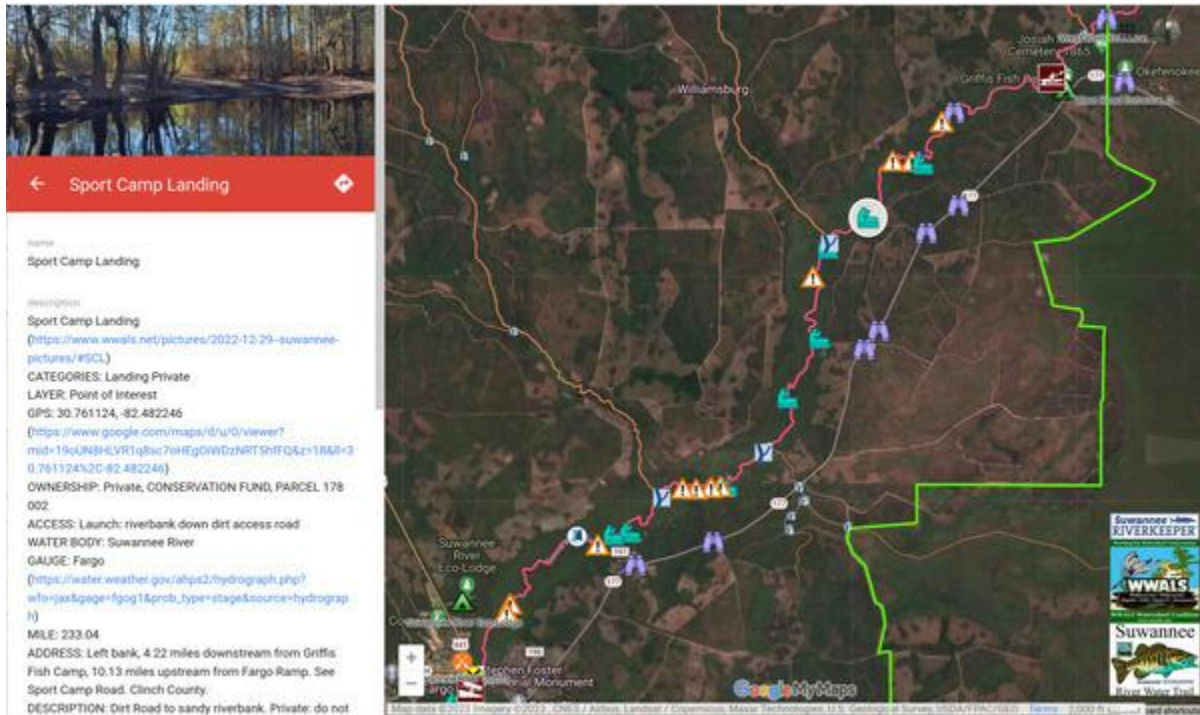
The white circle highlights Allen Camp Landing. As you can see it is quite close to Griffis Fish Camp.



<https://www.google.com/maps/d/u/0/viewer?mid=19oUN8HLVR1q8sc7oHEgOiWDzNRT5hfFQ&il=30.736971546209737%2C-82.49656979392364&z=13>
MILE: 234.42; 2.84 miles downstream from Griffis Fish Camp, 11.51 miles upstream from Fargo Ramp

Sport Camp Landing:

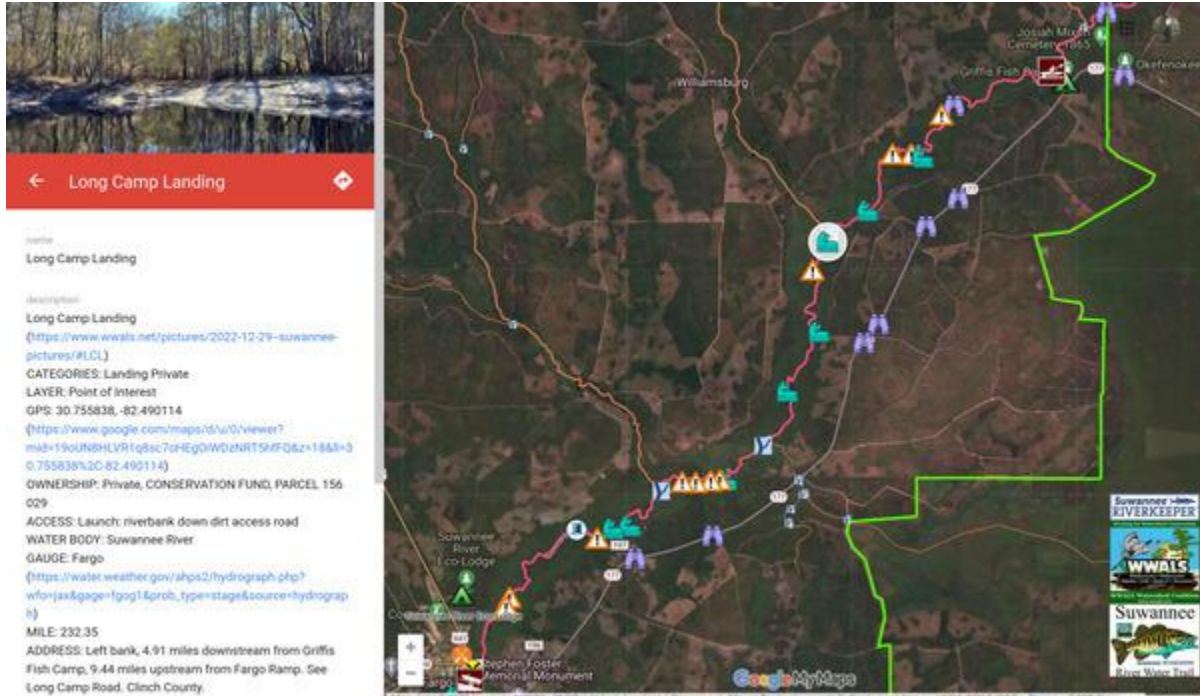
The white circle highlights Sport Camp Landing. It is quite close to Allen Camp Landing, so expense is an issue, picking one or the other to improve would be prudent. If we're trying to divide the long stretch into thirds, Sport Camp Landing is preferable, since it is about a third of the way to Fargo.



<https://www.google.com/maps/d/u/0/viewer?mid=19oUN8HLVR1q8sc7oHEgOiwDzNRT5hfFQ&ll=30.736971546209737%2C-82.49656979392364&z=13>
MILE: 233.04; 4.22 miles downstream from Griffis Fish Camp, 10.13 miles upstream from Fargo Ramp

Long Camp Landing:

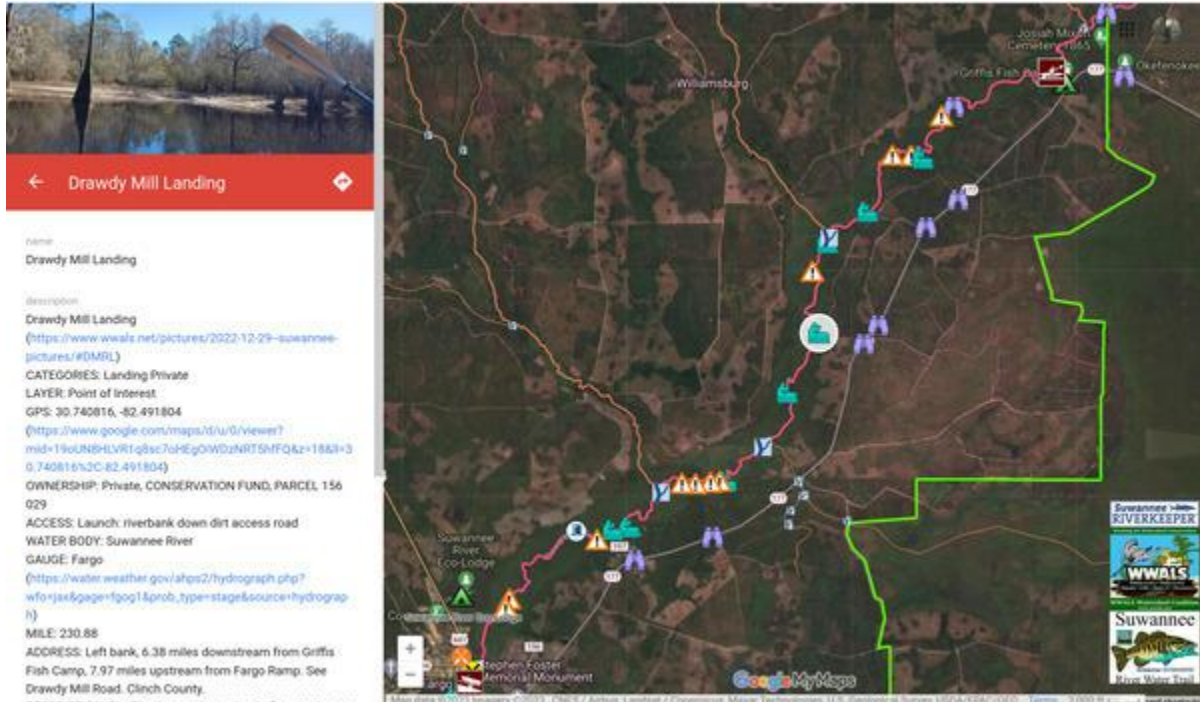
The white circle highlights Long Camp Landing. It is even closer to a third of the way to Fargo. However, it does not have as direct an access road as Sport Camp Landing.



<https://www.google.com/maps/d/u/0/viewer?mid=19oUN8HLVR1q8sc7oHEgOiWDzNRT5hfFQ&ll=30.736971546209737%2C-82.49656979392364&z=13>
MILE: 232.35; 4.91 miles downstream from Griffis Fish Camp, 9.44 miles upstream from Fargo Ramp

Drawdy Mill Landing:

The white circle highlights Drawdy Mill Landing. It is about halfway between Griffis and Fargo, so if the goal is to pick one landing to improve, this is the most obvious candidate. It also has a very direct road from GA 177.

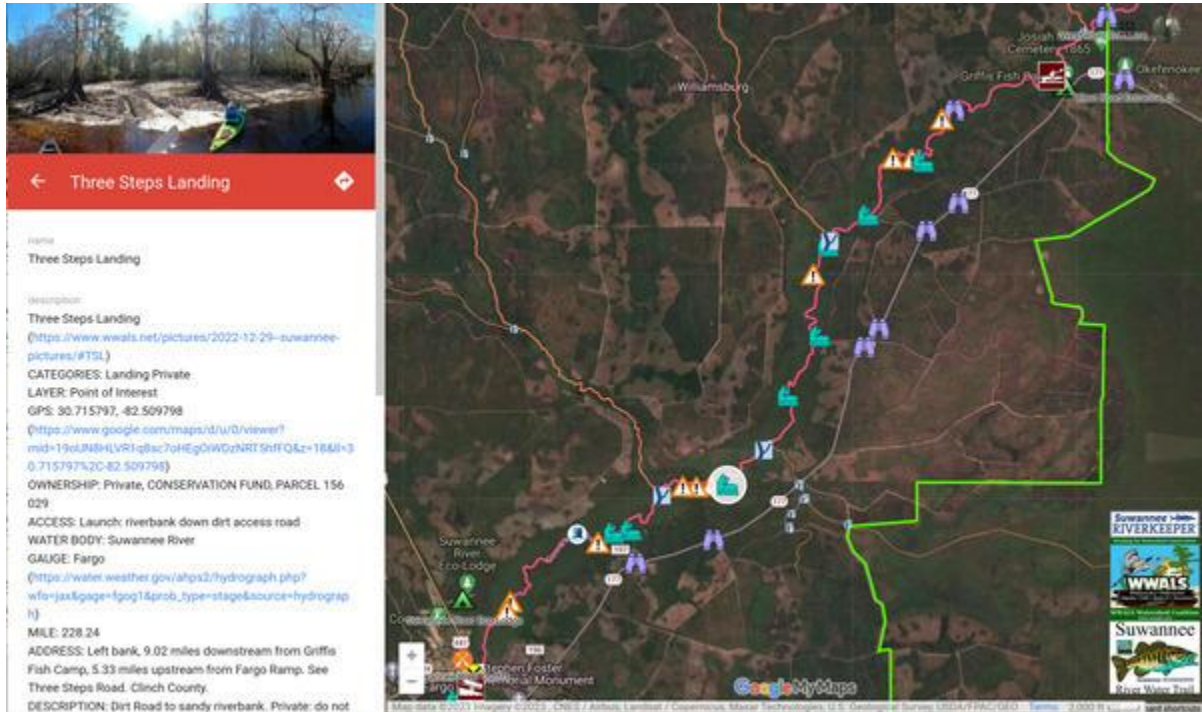


<https://www.google.com/maps/d/u/0/viewer?mid=19oUN8HLVR1q8sc7oHEgOiwDzNRT5hfFQ&ll=30.736971546209737%2C-82.49656979392364&z=13>

MILE: 230.88; 6.38 miles downstream from Griffis Fish Camp, 7.97 miles upstream from Fargo Ramp

Three Steps Landing:

The white circle highlights Three Steps Landing. It is about two thirds of the way from Griffis to Fargo. So in combination with Sport Camp Landing the two would divide the long stretch into thirds.

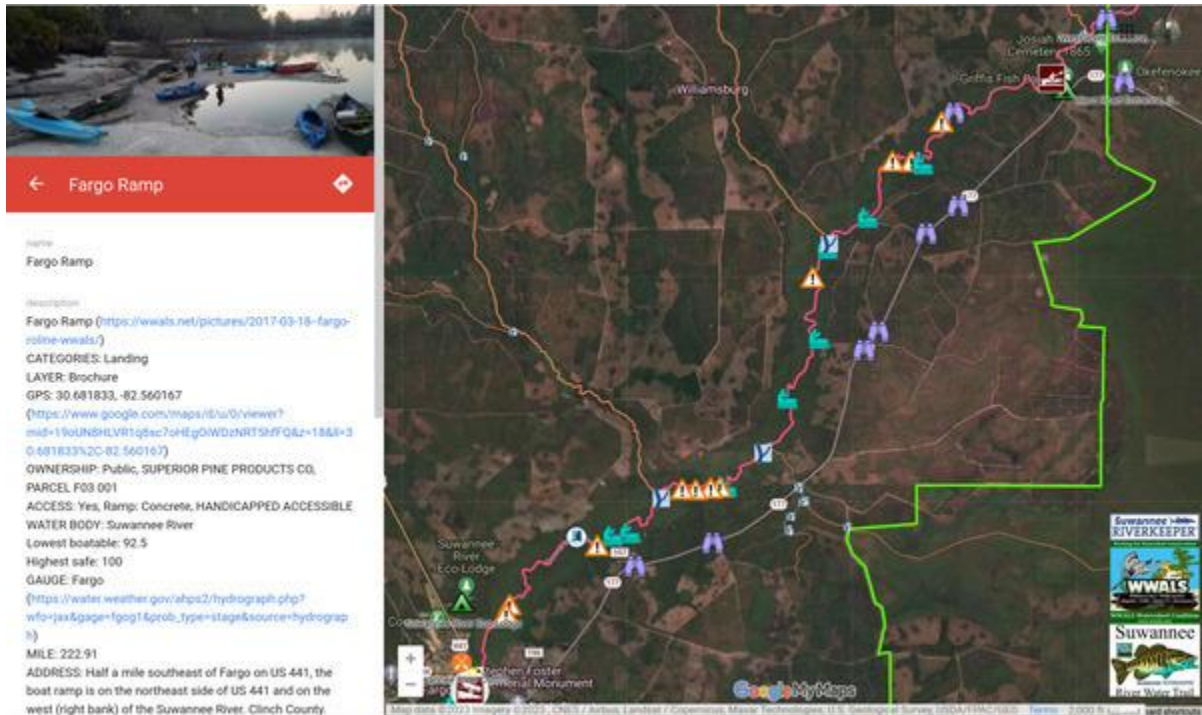


<https://www.google.com/maps/d/u/0/viewer?mid=19oUN8HLVR1q8sc7oHEg0iWDzNRT5hfFQ&ll=30.736971546209737%2C-82.49656979392364&z=13>

MILE: 228.24; 9.02 miles downstream from Griffis Fish Camp, 5.33 miles upstream from Fargo Ramp

Fargo Ramp:

Finally, Fargo Ramp is highlighted by this white circle in the bottom left corner of the map.



<https://www.google.com/maps/d/u/0/viewer?mid=19oUN8HLVR1q8sc7oHEgOiWDzNRT5hfFQ&ll=30.736971546209737%2C-82.49656979392364&z=13>

MILE: 222.91; 14.35 miles downstream from Griffis Fish Camp Landing